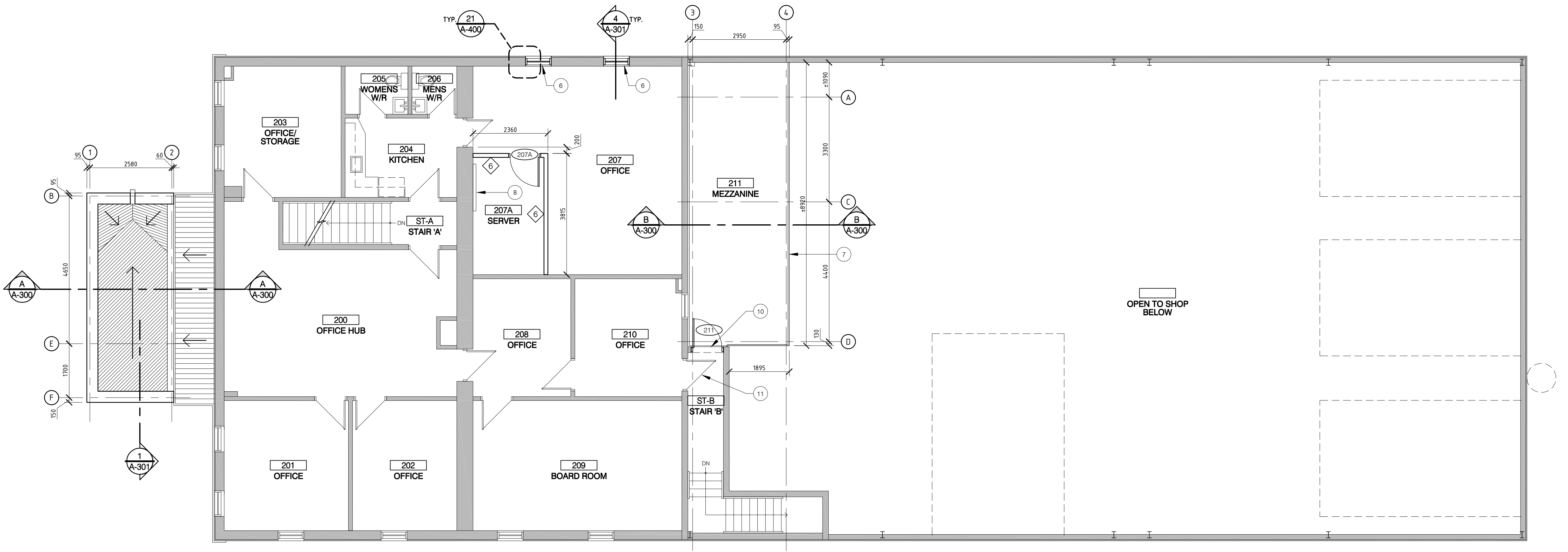


1 GROUND FLOOR PLAN - CONSTRUCTION
SCALE - 1:75



2 SECOND FLOOR PLAN - CONSTRUCTION
SCALE - 1:75

PARTITION / WALL TYPES

- 1 INFILL BLOCK
190mm CONCRETE BLOCK
140mm CONCRETE BLOCK
(EXTEND TO US DECK)
- 2 FULL HEIGHT PARTITION
16mm GYPSUM BOARD
52mm STEEL STUDS @ 400mm C/C
- PLYWOOD BACKING FOR MILLWORK AS REQ'D
16mm GYPSUM BOARD
(EXTEND PARTITION FULL HEIGHT)
- 3 WASHROOM PARTITION
16mm GYPSUM BOARD
92mm STEEL STUDS @ 400mm C/C
BATT INSULATION
16mm GYPSUM BOARD (MOISTURE RESISTANT ON WASHROOM SIDE)
(EXTEND PARTITION FULL HEIGHT)
- 4 TYPICAL PARTITION
16mm GYPSUM BOARD (MOISTURE RESISTANT)
92mm STEEL STUDS @ 400mm C/C
16mm GYPSUM BOARD (MOISTURE RESISTANT)
(EXTEND STUDS FULL HEIGHT & EXTEND GYP. BOD. 200mm ABOVE FINISHED CEILING)
- 5 CEILING HEIGHT PARTITION - LOW WALL
16mm GYPSUM BOARD
92mm STEEL STUDS @ 400mm C/C
BATT INSULATION
16mm GYPSUM BOARD
(EXTEND PARTITION TO US FINISHED CEILING)
- 6 PLUMBING PARTITION
16mm GYPSUM BOARD
92mm STEEL STUDS @ 400mm C/C
(EXTEND PARTITION FULL HEIGHT)
- 7 FURRED PARTITION @ EX. EXT. FACE
16mm GYPSUM BOARD
19mm WOOD FURRING @ 400mm C/C ON EXISTING STRUCTURE
(EXTEND PARTITION FULL HEIGHT)
- 8 ELECTRICAL PARTITION
16mm GYPSUM BOARD
64mm STEEL STUDS @ 400mm C/C
(EXTEND PARTITION FULL HEIGHT)
- 9 ELECTRICAL PANEL PARTITION
13mm GYPSUM BOARD (PAINTED)
92mm STEEL STUDS @ 400mm C/C
(EXTEND PARTITION TO 2450mm A.F.F.)
- 10 WATER METER PARTITION
16mm GYPSUM BOARD ON 92mm STEEL STUDS @ 400mm C/C
16mm GYPSUM BOARD
(EXTEND PARTITION TO 200mm ABOVE FIN. CEILING)
- WALL TYPES**
- W1 PREFINISHED CORRUGATED METAL SIDING ON 22mm VERTICAL Z-CURTS @ 1200mm C/C ON 50mm RIGID INSULATION ON TYVEK AIR BARRIER ON 16mm PLYWOOD SHEATHING ON 38x140 WOOD STUDS @ 400mm C/C W/ BATT INSULATION
6mm POLY VAPOUR BARRIER
16mm GYPSUM BOARD

NOTES

- 1 NEW 150mm WIDE X 200mm HT. CONCRETE CURB. EPOXY INTERIOR SIDE OF CURB & TOP OF EXISTING CONCRETE SLAB
- 2 NEW EXHAUST VENT (SEE MECH)
- 3 NEW STEEL BOLLARD (SEE DET.1/A-100). PATCH & REPAIR ASPHALT AS REQUIRED. SITE COMFORT OF BOLLARD LOCATIONS TO ALLOW FOR FUTURE DRIVING AISLE WIDTH OF MINIMUM 3.2 METERS.
- 4 NEW ROOF LADDER EXTENSION (SEE ELEVATIONS)
- 5 RELOCATED WORKBENCH
- 6 NEW ALUMINUM WINDOW & FRAME PATCH & REPAIR INTERIOR GYPSUM BOARD. PROVIDE METAL TRIM, SILL, AND CAULKING.
- 7 40mm DIA. STEEL GUARD @ 1070mm HT.
- 8 EXISTING SERVER PANEL TO REMAIN
- 9 NEW CONCRETE SLAB FLUSH & TO MATCH EXISTING THICKNESS
- 10 NEW 1-1/8" FRM HOLLOW METAL DOOR & PRESSED-STEEL FRAME
- 11 EXISTING DOOR TO REMAIN
- 12 NEW CONCRETE SIDEWALK C/W CONCRETE CURB & GRANULAR BASE. PATCH & REPAIR ASPHALT DRIVEWAY AS REQUIRED.
- 13 NEW TOP SOIL FOR LANDSCAPING
- 14 PROVIDE METAL FLOOR TRANSITION
- 15 INFILL EXISTING PIT WITH NEW 150mm CONCRETE SLAB (DOWELED INTO AND FLUSH WITH EXISTING SLAB ON ALL SIDES) ON 200mm GRANULAR 'A' LIFTS
- 16 LINE OF ASPHALT TO REMAIN (REINSTATE AS REQUIRED) AFTER COMPLETION OF SEPTIC FIELD
- 17 EXISTING STAIRCASE ABOVE TO REMAIN
- 18 EXISTING CARD READER RELOCATED (CITY OF OTTAWA TO CO-ORDINATE)
- 19 INFILL EXTERIOR METAL SIDING (COMMERCIAL RIB) ON 22mm VERTICAL FURRING CHANNEL @ 400mm C/C TYVEK AIR BARRIER ON 13mm EXTERIOR GYPSUM SHEATHING ON 152mm STEEL STUDS @ 400mm C/C W/ BATT INSULATION
6mm POLY VAPOUR BARRIER
16mm GYPSUM BOARD
- 20 NEW STORAGE LOCKERS (29 IN TOTAL)
- MANUFACTURER: "COGAN"
- TYPE: TA-50 GEAR LOCKERS
- PRODUCT DETAILS: 2"x2"x10-GA. WELDED WIRE MESH (SIDE PANEL & DOOR), UNFRAMED
2"x2"x1/8-GA. GALVANIZED WELDED WIRE MESH W/ 1-1/4"x1-1/4"x12-GA. TRANSOM ANGLE, 7'-0" SIDE PANEL HEIGHT, 1'-6" SHELF (WIDTH & DEPTH), 6" SWEEP, COAT ROD C/W 2 HOOKS ON EACH SIDE, TOP & BOTTOM SINGLE SWING DOOR, WELDED HANDLE & PADLOCK HASP, POWDER COATED COLOUR 'STANDARD GREY'
- 21 EXISTING RELOCATED STORAGE LOCKERS. GENERAL CONTRACTOR TO PROVIDE 7 NEW LOCKERS TO MATCH EXISTING "GLOBE" OR APPROVED EQUIVALENT LOCKERS
- 22 NEW LOCKER ROOM BENCH (SEE DET.23/A-100)
- 23 NEW 600mm X 600mm PRECAST SPLASH PAD



PLANNING AND INFRASTRUCTURE PORTFOLIO
INFRASTRUCTURE SERVICES DEPARTMENT
DESIGN AND CONSTRUCTION - BUILDINGS & PARKS BRANCH

PORTFOLIO DE L'URBANISME ET DE L'INFRASTRUCTURE
DÉPARTEMENT DES SERVICES D'INFRASTRUCTURE
DIRECTION DE CONCEPTION ET DE CONSTRUCTION - IMMEUBLES ET DES PARCS



THE ENGINEER WAIVES ANY AND ALL RESPONSIBILITY AND LIABILITY FOR PROBLEMS WHICH ARE NOT RESPECTED TO FOLLOW THE PLANS, SPECIFICATIONS AND THE DESIGN INTENT THEY CONVEY OR FOR PROBLEMS WHICH ARISE FROM OTHER FAILURE TO OBTAIN AND/OR FOLLOW THE ENGINEER'S GUIDANCE WITH RESPECT TO ANY ERRORS, OMISSIONS, INCONSISTENCIES, AMBIGUITIES OR CONFLICT WHICH ARE ALLEGED.

L'INGÉNIEUR DÉCLINE TOUTE RESPONSABILITÉ DÉCOULANT DE PROBLÈMES FAISANT SUITE À UN NON RESPECT DES PLANS, DES SPÉCIFICATIONS ET DE L'INTENTION DU CONCEPTEUR QUELS QU'ILS SONT, OU DE TOUTES LES PROBLÈMES POUVANT RÉSULTER DU DÉFAUT D'OBTENIR ET/OU DE SUIVRE LES CONSEILS DE L'INGÉNIEUR EN CE QUI CONCERNE LES ERREURS, OMISSIONS, INCONSISTANCES, AMBIGUITÉS OU CONFLITS ALLÉGUÉS.

6			
5			
4			
3			
2	ISSUED FOR PERMIT/REVIEW	30 SEPT 2014	S.H.
1	ISSUED FOR CLIENT REVIEW	18 SEPT 2014	S.H.

DESIGNED BY / CONCEPAR	DESIGNED BY / VERIFIEUR
S.HAYWARD	S.HAYWARD
DRAWN BY / DESINEUR	SCALE / ÉCHELLE
W.DUNK	AS NOTED

DRAWING TITLE
SCALE:
SHEET NUMBER

THIS DRAWING IS THE PROPERTY OF THE CITY OF OTTAWA AND ALL COPYRIGHT IS RESERVED. DIMENSIONS ON DRAWINGS ARE FOR ESTIMATING PURPOSES ONLY. IT IS THE RESPONSIBILITY OF EACH CONTRACTOR AND SUB-CONTRACTOR OR CONSULTANT TO CHECK AND VERIFY ALL DIMENSIONS AND CONDITIONS ON SITE. NOTIFY OWNER OF ANY ERRORS OR OMISSIONS PRIOR TO COMMENCING THE WORK. DO NOT SCALE THE DRAWINGS.

CE DESSIN CONSTITUE LA PROPRIÉTÉ DE LA VILLE D'OTTAWA ET TOUT DROIT D'AUTEUR EST RÉSERVÉ. LES DIMENSIONS UTILISÉES LE SONT À DES FINS D'ESTIMATION SEULEMENT. IL INCOMBE À CHAQUE ENTREPRENEUR, SOUS-CONTRACTANT OU CONSULTANT DE VÉRIFIER TOUTES LES DIMENSIONS ET LES CONDITIONS SUR LE CHANTIER. VEUILLEZ INFORMER LE PROPRIÉTAIRE DE TOUTE ERREUR OU OMISSION AVANT D'ENTAMER LES TRAVAUX. NE DRESSEZ PAS LES PLANS À L'ÉCHELLE.

ARCHITECT / ARCHITECTE
CONSULTANT / EXPERT-CONSEIL

ONTARIO ASSOCIATION OF ARCHITECTS
SCOTT HAYWARD
LICKWEE
6393

CONSULTANT / EXPERT-CONSEIL
CONSULTANT / EXPERT-CONSEIL

PROJECT / LOCATION / PROJET / ENDROIT

**BUILDING RENOVATIONS
CITY OF OTTAWA
FORESTRY SERVICES**

125 WALGREEN RD.
OTTAWA, ONTARIO

DRAWING / DESSIN
**GROUND FLOOR PLAN
SECOND FLOOR PLAN
CONSTRUCTION**

BUSINESS ENTITY / NUMÉRO DE L'ENTITÉ
BUILDING NUMBER / NUMÉRO DU BATIMENT

SHEET NO. / FEUILLE NO.
A-102

PROJECT NO. / NUMÉRO DE PROJET
/ 14-54