

Addendum No. 1

Date: May 30, 2017

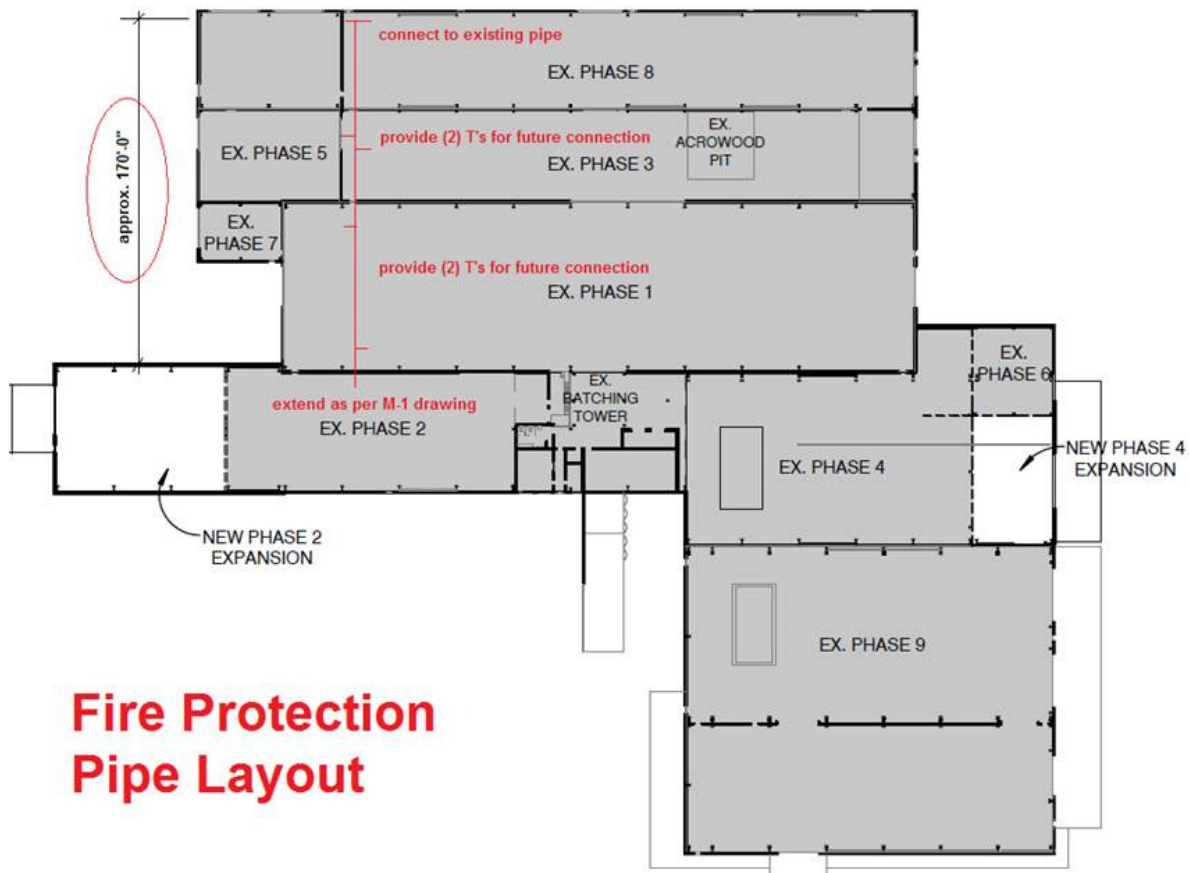
Page: 1 of 2

Project: M-CON PHASE 2 & 4 EXTENSIONS (2460 Carp Road)

This Addendum forms part of the contract documents and is to be read, interpreted and coordinated with all other parts. The cost of all contained herein is to be included in the contract sum. The following revisions supersede the information contained in the original drawings and specifications issued for the above-named project to the extent referenced and shall become part thereof.

Mechanical

- 1.1 Standpipe contractor to connect new system in Phase 2 to existing pipe located in Phase 8. The existing pipe is approx. 170'-0" from the wall separating Phase 1 and Phase 2. Contractor to include a total of (4) stubs for future connections. The ceiling heights vary across the existing building and will require risers and drops accordingly.



Fire Protection Pipe Layout

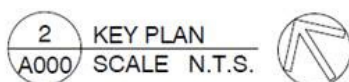


Photo of pipe at connection area in Phase 8



End of Addendum.