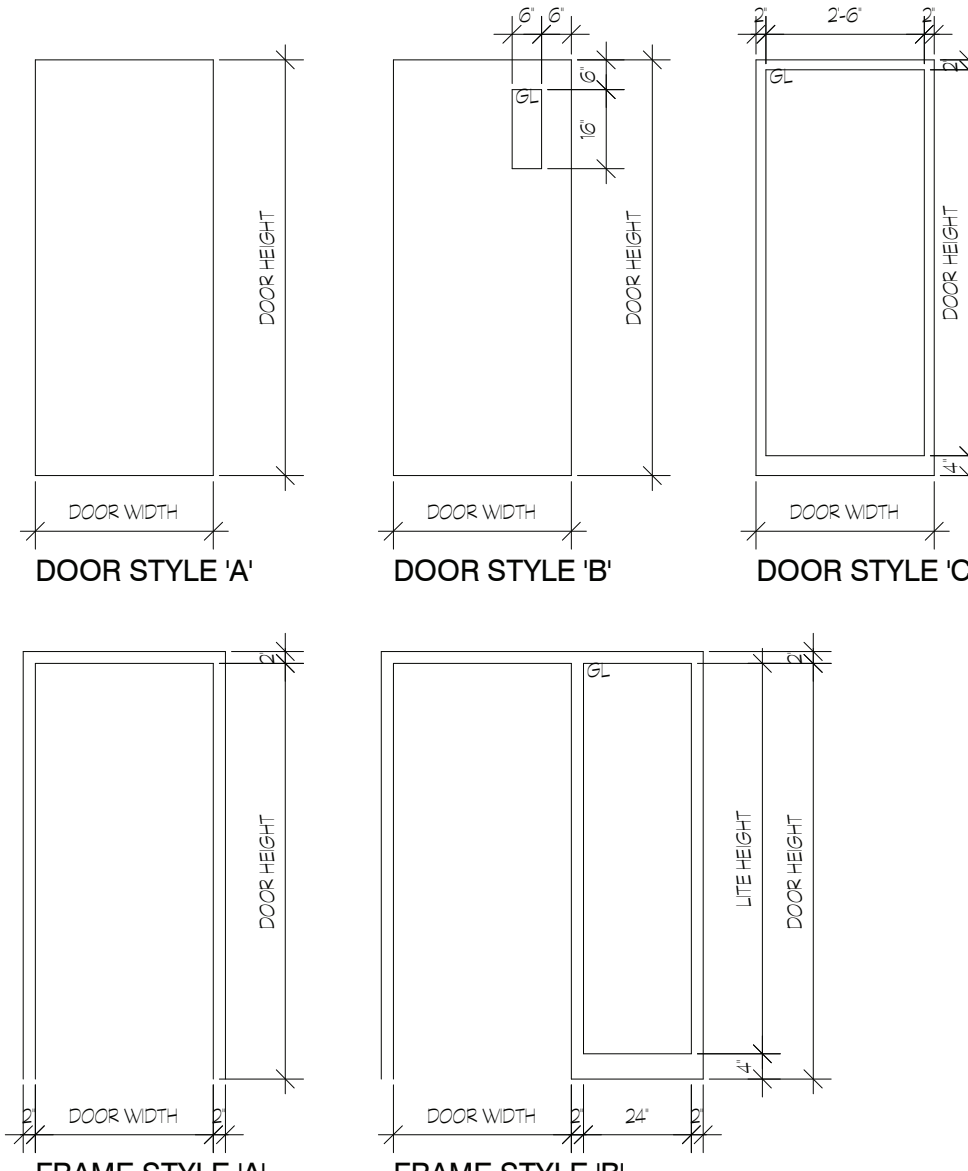
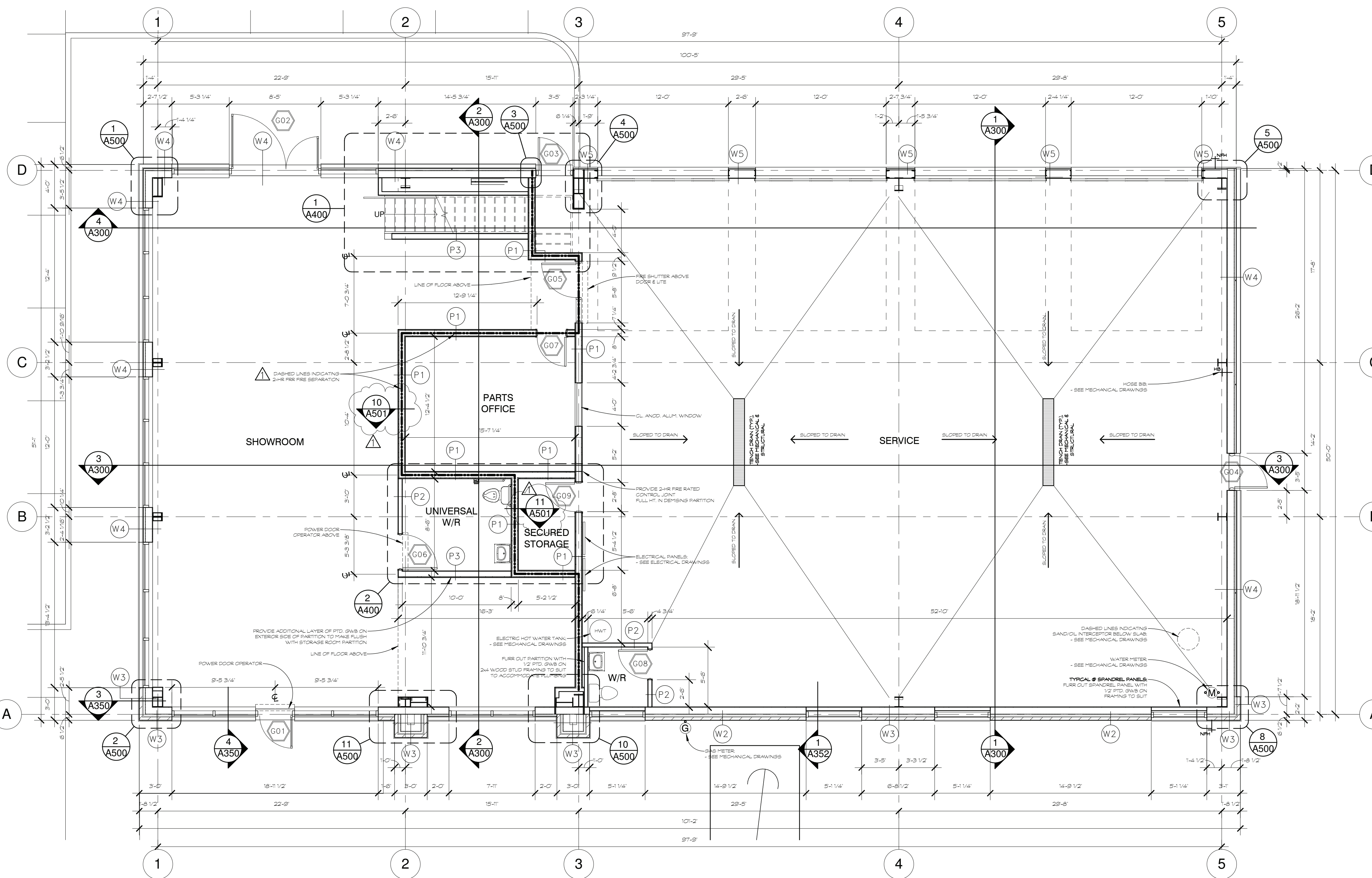


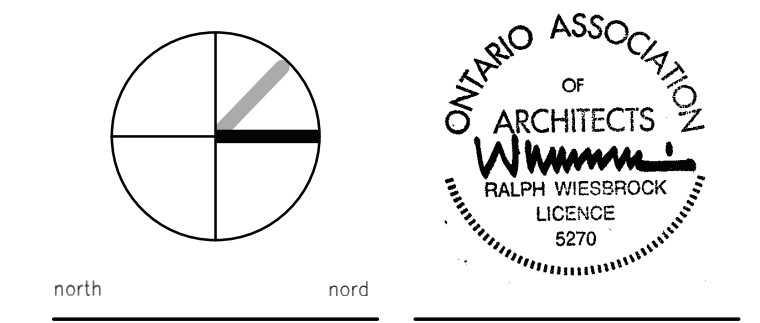
DOOR/FRAME/HARDWARE SCHEDULE											HARDWARE	REMARKS																						
No.	LOCATION	DOOR	FRAME	U.L.C.																														
from	to	width	height	thick.	TYPE	STYLE	FINISH	TYPE	FINISH	MINUTES	latchset	lockset	rim panic	closer	push pl.	pull	hinges	floor stop	kick plate	privacy set	signage	threshold	weath. strip	knob	flushbolt	astagal	coordinator	wall stop	deadbolt	cylinder	door viewer	magnetic hold open	door No.	
G01	SHOWROOM	EXTERIOR	ALUM	C	CL AND	ALUM	CL AND																									G01	HARDWARE BY ALUM. SUPPLIER.	
G02	SHOWROOM	EXTERIOR	ALUM	C	CL AND	ALUM	CL AND																									G02	HARDWARE BY ALUM. SUPPLIER.	
G03	SERVICE	EXTERIOR	HM	B	PTD	PS	PTD				*	*																				G03	* EXTERIOR THUMB LATCH	
G04	SERVICE	EXTERIOR	HM	B	PTD	PS	PTD				*	*																				G04	* EXTERIOR THUMB LATCH	
G05	SERVICE	SHOWROOM	HM	A	PTD	PS	PTD				*	*																				G05	* STOREROOM FUNCTION LOCKSET POWER DOOR OPERATOR - SEE DRAWINGS FOR DETAILS	
G06	SHOWROOM	UNIVERSAL W/R	HM	A	PTD	PS	PTD				*	*																				G06	* STOREROOM FUNCTION	
G07	SHOWROOM	PARTS OFFICE	HM	A	PTD	PS	PTD																									G07		
G08	SERVICE	BATHROOM	HM	A	PTD	PS	PTD																									G08		
G09	SERVICE	SECURED STORAGE	HM	A	PTD	PS	PTD				*	*																				G09	* STOREROOM FUNCTION	
OVERHEAD DOORS																																		
OH1	SERVICE AREA	EXTERIOR																															OH1	SEE DRAWINGS FOR LOCATION / DETAILS
OH2	SERVICE AREA	EXTERIOR																															OH2	SEE DRAWINGS FOR LOCATION / DETAILS
OH3	SERVICE AREA	EXTERIOR																															OH3	SEE DRAWINGS FOR LOCATION / DETAILS
OH4	SERVICE AREA	EXTERIOR																															OH4	SEE DRAWINGS FOR LOCATION / DETAILS



**NOTES:**  
 Contractor shall check and verify all dimensions on site and report any discrepancies to the Architect before proceeding.



1	RESPONSE TO CITY COMMENTS	12 MAR 2018
0	ISSUED FOR PERMIT	08 FEB 2018
no.	revision	date



**kwc** 383 Parkdale Avenue, Suite 201  
 Ottawa Ontario Canada K1Y 4R4

**KWC ARCHITECTS INC.**

PHONE (613) 238-2117  
 FAX (613) 238-6595  
 E MAIL kwc@kwc-arch.com

detail no.	1	detail no.
sheet no.	A1	feuille no.

**PROPOSED AUTOMOBILE DEALERSHIP**

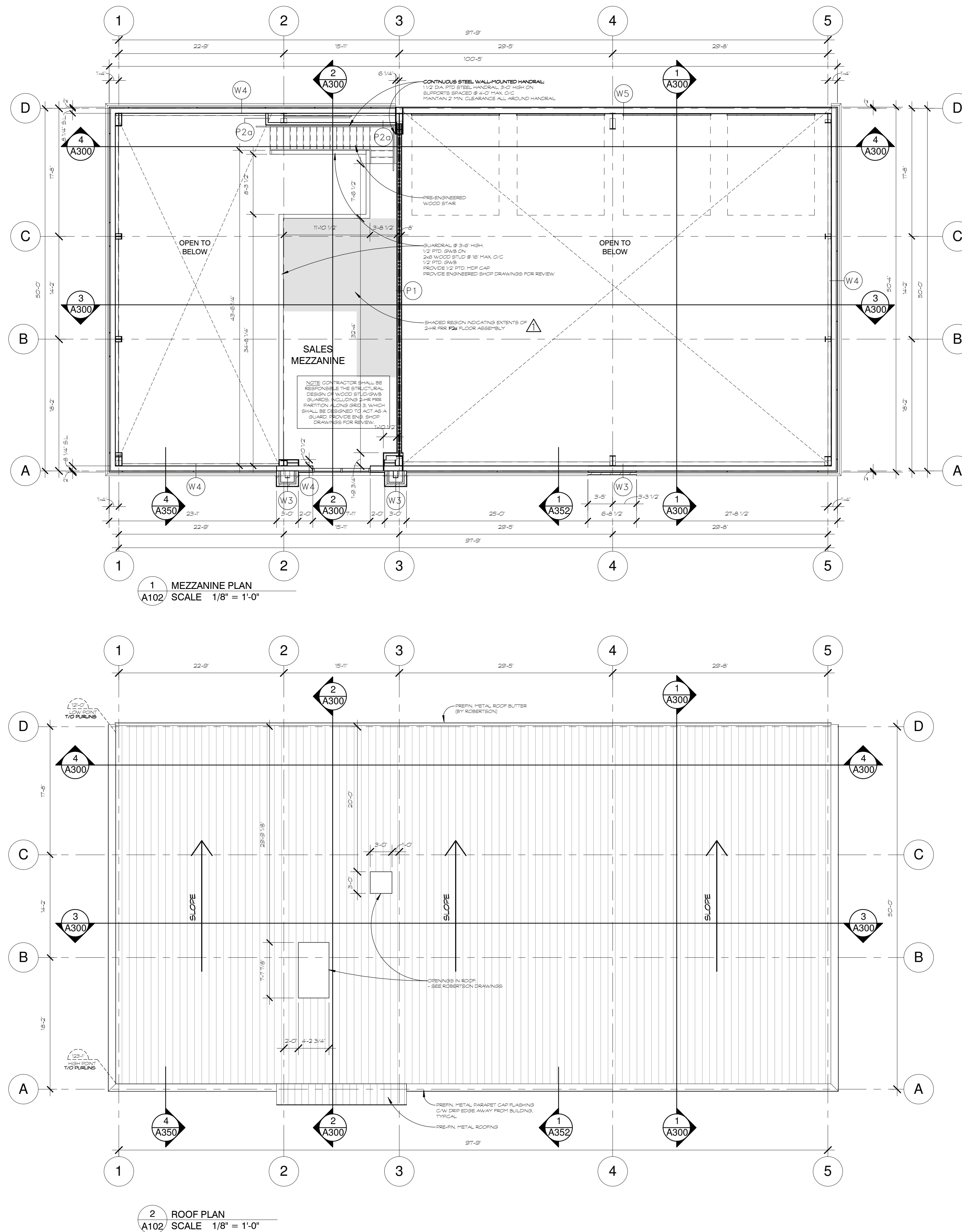
5835 HAZELDEAN RD.  
 OTTAWA, ON.

designed by: [signature] approved by: [signature] RW  
 drawn by: TC project no. [blank]  
 date: 08 FEBRUARY 2018 scale: as noted  
 drawing / dessin

**GROUND FLOOR PLAN, D/F/H SCHEDULE**

revision: [blank] sheet no. no. de feuille: **A101**

plot scale 1:1



1 MEZZANINE PLAN  
A102 SCALE 1/8" = 1'-0"

2 ROOF PLAN  
A102 SCALE 1/8" = 1'-0"

**TYPICAL WALL, PARTITION & ROOF CONSTRUCTION ASSEMBLIES**

**TYPICAL EXTERIOR WALL CONSTRUCTIONS**

SEE ALSO NOTES BELOW FOR FIRESTOPPING AND FOR CBC ENERGY EFFICIENCY STANDARDS, COMPLY WITH TABLE 2.11.2.A COMPLIANCE PACKAGE 9

- W1 - CONCRETE FOUNDATION WALL (2)**  
1/2" CONCRETE  
3" RIGID INSULATION TO 2'-0" BELOW GRADE @ ALL PERIMETERS
- W2 - STONE VENEER WALL (4-1-3)**  
STONE VENEER ON  
1" MIN. AIR SPACE  
2" RIGID INSULATION ON  
VAPOUR PERMEABLE AIR/MOISTURE BARRIER (COMPATIBLE WITH EPS SYSTEM) ON  
7/8" OSB SHEATHING ON  
2x8 WOOD STUD FRAMING @ 16" MAX. O.C.  
POLY. VAPOUR BARRIER  
1/2" PTD. GWB
- W3 - BRICK VENEER WALL (4-1-3)**  
BRICK VENEER ON  
1" MIN. AIR SPACE  
2" RIGID INSULATION ON  
VAPOUR PERMEABLE AIR/MOISTURE BARRIER (COMPATIBLE WITH EPS SYSTEM) ON  
7/8" OSB SHEATHING ON  
2x8 WOOD STUD FRAMING @ 16" MAX. O.C.  
POLY. VAPOUR BARRIER  
1/2" PTD. GWB
- W4 - EPS WALL (2 7/8")**  
EPS (DURVIT) INSULATION PLUS NC, OR SIMILAR, COLOUR BEIGE, ON  
2" EPS INSULATION  
C/W INTEGRAL DRAINAGE PLANE, ADHERED ON  
VAPOUR PERMEABLE AIR/MOISTURE BARRIER (COMPATIBLE WITH EPS SYSTEM) ON  
7/8" OSB SHEATHING ON  
2x8 WOOD STUD FRAMING @ 16" MAX. O.C.  
POLY. VAPOUR BARRIER  
1/2" PTD. GWB
- W5 - METAL SIDING WALL (2 3/4")**  
PRE-FIN. METAL SIDING PANELS (SEE ROBERTSON DRAWINGS) ON  
3 1/2" FACED METAL BUILDING INSULATION  
C/W TAPPED BEAMS FOR CONTINUOUS AIR BARRIER ON  
HORIZONTAL S-GIRTS (SEE ROBERTSON DRAWINGS)  
5/2" BATT INSULATION  
INTERIOR PRE-FIN. METAL LINER PANEL

**TYPICAL INTERIOR PARTITION CONSTRUCTIONS**

- P1 - DEHISING PARTITION (8)**  
FRR REQUIRED 2-HR.  
FRR PROVIDED 2-HR. ULC US01  
2 LAYERS OF 5/8" FRECCODE C GWB  
SCREW ATTACHED, JOINTS STAGGERED, ON BOTH SIDES OF  
2x8 WOOD STUD FRAMING @ 16" MAX. O.C.  
C/W 5/2" MINERAL WOOL INSULATION WITHIN STUD CAVITY
- P2 - GENERAL PARTITION (4 1/2")**  
1/2" PTD. GWB ON  
2x4 WOOD STUD FRAMING TO SUIT  
1/2" PTD. GWB
- P2a - GENERAL PARTITION (4)**  
1/2" PTD. GWB (ONLY ON INTERIOR SIDE OF STUD) ON  
2x4 WOOD STUD FRAMING TO SUIT
- P3 - GENERAL PARTITION (6 1/2")**  
1/2" PTD. GWB ON  
2x8 WOOD STUD FRAMING TO SUIT  
1/2" PTD. GWB

**TYPICAL FLOOR CONSTRUCTIONS**

FOR CBC ENERGY EFFICIENCY STANDARDS, COMPLY WITH TABLE 2.11.2.A COMPLIANCE PACKAGE 9

- F1 - CONCRETE SLAB-ON-GRADE**  
8" REINFORCED PRECAST CONCRETE SLAB ON  
COMPACTED GRANULAR BACKFILL  
-SEE STRUCTURAL DRAWINGS
- F2 - WOOD FRAMED MEZZANINE**  
3/4" OSB SUB-FLOOR ON  
1 1/2" ENGINEERED WOOD JOISTS @ 16" MAX. O.C.  
C/W 3 1/2" GLASS FIBRE INSULATION  
FURSING STRIPS @ 24" MAX. O.C.  
1/2" PTD. GWB

- F2a - 2-HR FRR WOOD FRAMED MEZZANINE**  
FRR REQUIRED 2-HR.  
FRR PROVIDED 2-HR. UL L558  
3/4" OSB SUB-FLOOR ON  
1 1/2" ENGINEERED WOOD JOISTS @ 16" MAX. O.C.  
C/W 3 1/2" GLASS FIBRE INSULATION  
5/8" BASE LAYER FRECCODE C GWB, TAPED & SANDED  
RESILIENT CHANNELS @ 16" O.C.  
2 LAYERS 5/8" FRECCODE C GWB, TAPED & SANDED

**TYPICAL ROOF CONSTRUCTIONS**

- R1 - METAL ROOF**  
PRE-FIN. METAL STANDING SEAM ROOF PANELS ON  
1/2" METAL BUILDING INSULATION ON  
8x16" STEEL ROOF CLIPS (BY ROBERTSON) ON  
METAL LINER BASE SHEET ON  
PRE-ENGINEERED METAL PURLINS (BY ROBERTSON)  
-SEE ROBERTSON DRAWINGS

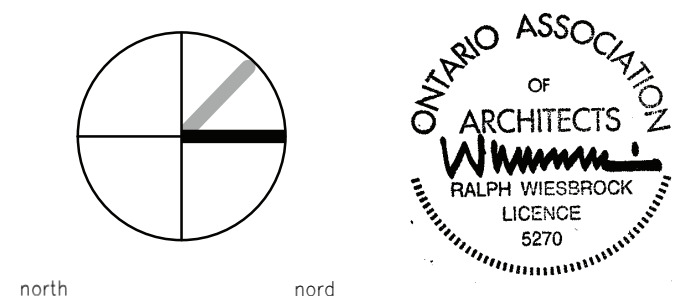
**FIRESTOPPING**

FIRESTOP ALL FLOOR/WALL/PARTITION FIRE SEPARATIONS AT ALL ROOF DECKS, BEAMS, JOISTS, FLASHING WALL, ETC. WITH ULC APPROVED MATERIALS & SYSTEMS.  
NO GAP TO BE GREATER THAN 2 INCHES.  
ALL GAPS LESS THAN 5/8" - CAULK  
ALL GAPS GREATER THAN 5/8" - EMPLOY COMPRESSED MINERAL WOOL FILL AND APPROVED SEALING MATERIAL BOTH SIDES.  
STANDARD OF ACCEPTANCE  
MINERAL WOOL - HLT CR608, HLT CR609 OR HLT CR610  
CAULK/SEALANT - HLT CR608, HLT CR609 OR HLT CR610

**NOTES:**

Contractor shall check and verify all dimensions on site and report any discrepancies to the Architect before proceeding.

1	RESPONSE TO CITY COMMENTS	12 MAR 2018
0	ISSUED FOR PERMIT	08 FEB 2018
no.	revision	date



**kwc** 383 Parkdale Avenue, Suite 201  
Ottawa Ontario Canada K1Y 4R4

**KWC ARCHITECTS INC.**

PHONE (613) 238-2117  
FAX (613) 238-6595  
E MAIL kwc@kwc-arch.com

detail no.	1	detail no.
sheet no.	A1	feuille no.

**PROPOSED AUTOMOBILE DEALERSHIP**

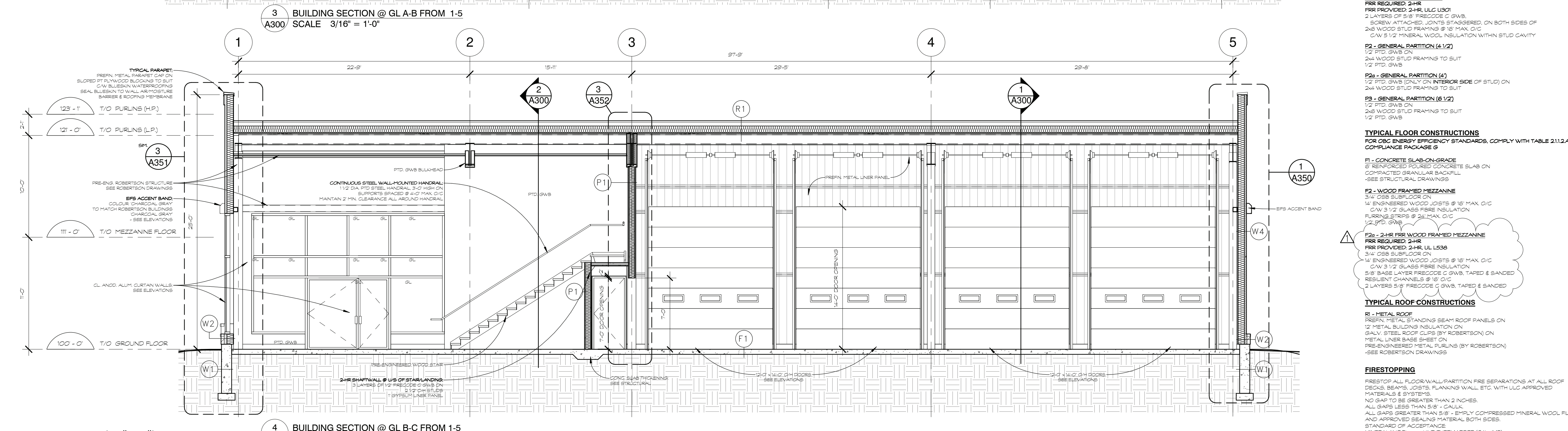
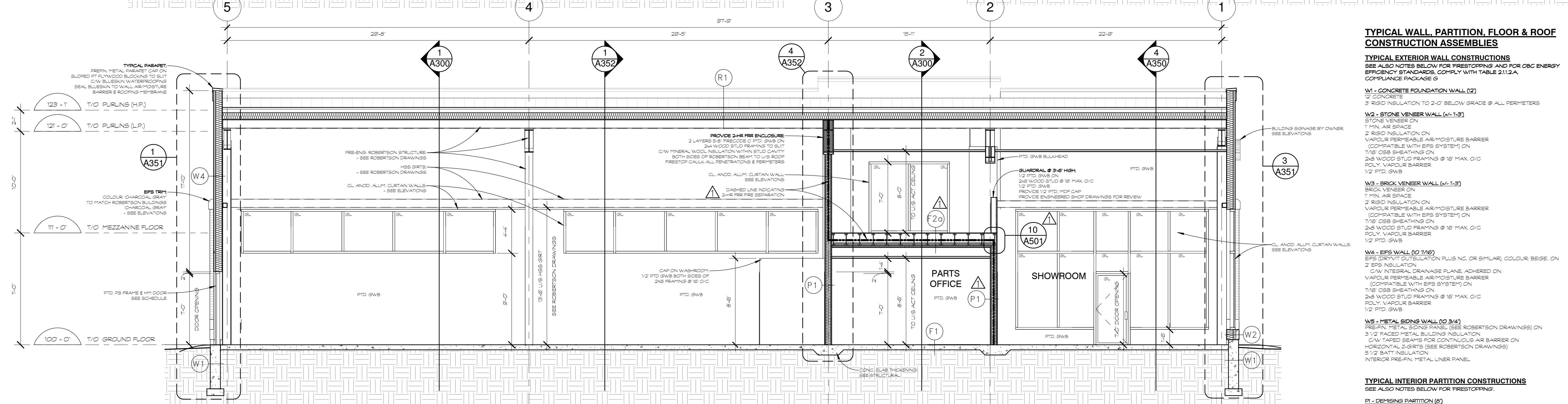
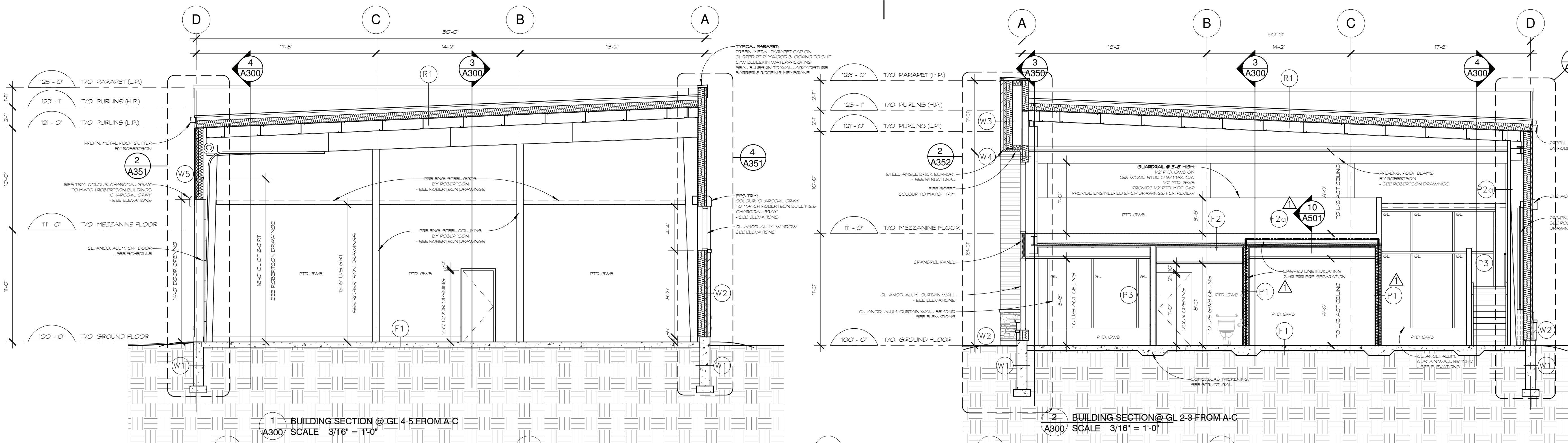
5835 HAZELDEAN RD.  
OTTAWA, ON.

designed by conçu par	approved by approuvé par	RW
drawn by dessiné par	project no. no. du projet	TC
date	scale	08 FEBRUARY 2018 as noted

**MEZZANINE PLAN, ROOF PLAN**

**NOTES:**

Contractor shall check and verify all dimensions on site and report any discrepancies to the Architect before proceeding.



**TYPICAL WALL, PARTITION & ROOF CONSTRUCTION ASSEMBLIES**

**TYPICAL EXTERIOR WALL CONSTRUCTIONS**

SEE ALSO NOTES BELOW FOR FIRESTOPPING AND FOR CBC ENERGY EFFICIENCY STANDARDS, COMPLY WITH TABLE 2.11.2.A. COMPLIANCE PACKAGE G

**W1 - CONCRETE FOUNDATION WALL (2)**  
 12" CONCRETE  
 3" RIGID INSULATION TO 2'-0" BELOW GRADE @ ALL PERIMETERS

**W2 - STONE VENEER WALL (4/1-3)**  
 STONE VENEER ON  
 1" MIN. AIR SPACE  
 2" RIGID INSULATION ON  
 VAPOUR PERMEABLE AIR-MOISTURE BARRIER  
 (COMPATIBLE WITH EPS SYSTEM) ON  
 7/8" OSB SHEATHING ON  
 2x4 WOOD STUD FRAMING @ 16" MAX. O.C.  
 POLY. VAPOUR BARRIER  
 1/2" PTD. G.W.B.

**W3 - BRICK VENEER WALL (4/1-3)**  
 BRICK VENEER ON  
 1" MIN. AIR SPACE  
 2" RIGID INSULATION ON  
 VAPOUR PERMEABLE AIR-MOISTURE BARRIER  
 (COMPATIBLE WITH EPS SYSTEM) ON  
 7/8" OSB SHEATHING ON  
 2x4 WOOD STUD FRAMING @ 16" MAX. O.C.  
 POLY. VAPOUR BARRIER  
 1/2" PTD. G.W.B.

**W4 - EPS WALL (2/7/6)**  
 EPS (DENSITY 15 LB/FT<sup>3</sup> PLUS NC. OR SIMILAR) COLOUR BEIGE ON  
 2" EPS INSULATION  
 C/W INTEGRAL DRAINAGE PLANS, ADHERED ON  
 VAPOUR PERMEABLE AIR-MOISTURE BARRIER  
 (COMPATIBLE WITH EPS SYSTEM) ON  
 7/8" OSB SHEATHING ON  
 2x4 WOOD STUD FRAMING @ 16" MAX. O.C.  
 POLY. VAPOUR BARRIER  
 1/2" PTD. G.W.B.

**W5 - METAL SIDING WALL (2/3/4)**  
 PREFIN. METAL SIDING PANEL (SEE ROBERTSON DRAWINGS) ON  
 3/2" FACED METAL BUILDING INSULATION  
 C/W TAPED BEAMS FOR CONTINUOUS AIR BARRIER ON  
 HORIZONTAL JOISTS (SEE ROBERTSON DRAWINGS)  
 3/2" BATT INSULATION  
 INTERIOR PREFIN. METAL LINER PANEL

**W6 - METAL ROOF (2/3/4)**  
 PREFIN. METAL ROOF PANELS ON  
 12" METAL BUILDING INSULATION ON  
 GALV. STEEL ROOF CURBS BY ROBERTSON ON  
 METAL LINER BASE SHEET ON  
 PRE-ENGINEERED METAL PURLINS (BY ROBERTSON)  
 -SEE ROBERTSON DRAWINGS

**W7 - METAL ROOF (2/3/4)**  
 PREFIN. METAL ROOF PANELS ON  
 12" METAL BUILDING INSULATION ON  
 GALV. STEEL ROOF CURBS BY ROBERTSON ON  
 METAL LINER BASE SHEET ON  
 PRE-ENGINEERED METAL PURLINS (BY ROBERTSON)  
 -SEE ROBERTSON DRAWINGS

**W8 - METAL ROOF (2/3/4)**  
 PREFIN. METAL ROOF PANELS ON  
 12" METAL BUILDING INSULATION ON  
 GALV. STEEL ROOF CURBS BY ROBERTSON ON  
 METAL LINER BASE SHEET ON  
 PRE-ENGINEERED METAL PURLINS (BY ROBERTSON)  
 -SEE ROBERTSON DRAWINGS

**W9 - METAL ROOF (2/3/4)**  
 PREFIN. METAL ROOF PANELS ON  
 12" METAL BUILDING INSULATION ON  
 GALV. STEEL ROOF CURBS BY ROBERTSON ON  
 METAL LINER BASE SHEET ON  
 PRE-ENGINEERED METAL PURLINS (BY ROBERTSON)  
 -SEE ROBERTSON DRAWINGS

**W10 - METAL ROOF (2/3/4)**  
 PREFIN. METAL ROOF PANELS ON  
 12" METAL BUILDING INSULATION ON  
 GALV. STEEL ROOF CURBS BY ROBERTSON ON  
 METAL LINER BASE SHEET ON  
 PRE-ENGINEERED METAL PURLINS (BY ROBERTSON)  
 -SEE ROBERTSON DRAWINGS

**W11 - METAL ROOF (2/3/4)**  
 PREFIN. METAL ROOF PANELS ON  
 12" METAL BUILDING INSULATION ON  
 GALV. STEEL ROOF CURBS BY ROBERTSON ON  
 METAL LINER BASE SHEET ON  
 PRE-ENGINEERED METAL PURLINS (BY ROBERTSON)  
 -SEE ROBERTSON DRAWINGS

**W12 - METAL ROOF (2/3/4)**  
 PREFIN. METAL ROOF PANELS ON  
 12" METAL BUILDING INSULATION ON  
 GALV. STEEL ROOF CURBS BY ROBERTSON ON  
 METAL LINER BASE SHEET ON  
 PRE-ENGINEERED METAL PURLINS (BY ROBERTSON)  
 -SEE ROBERTSON DRAWINGS

**W13 - METAL ROOF (2/3/4)**  
 PREFIN. METAL ROOF PANELS ON  
 12" METAL BUILDING INSULATION ON  
 GALV. STEEL ROOF CURBS BY ROBERTSON ON  
 METAL LINER BASE SHEET ON  
 PRE-ENGINEERED METAL PURLINS (BY ROBERTSON)  
 -SEE ROBERTSON DRAWINGS

**W14 - METAL ROOF (2/3/4)**  
 PREFIN. METAL ROOF PANELS ON  
 12" METAL BUILDING INSULATION ON  
 GALV. STEEL ROOF CURBS BY ROBERTSON ON  
 METAL LINER BASE SHEET ON  
 PRE-ENGINEERED METAL PURLINS (BY ROBERTSON)  
 -SEE ROBERTSON DRAWINGS

**W15 - METAL ROOF (2/3/4)**  
 PREFIN. METAL ROOF PANELS ON  
 12" METAL BUILDING INSULATION ON  
 GALV. STEEL ROOF CURBS BY ROBERTSON ON  
 METAL LINER BASE SHEET ON  
 PRE-ENGINEERED METAL PURLINS (BY ROBERTSON)  
 -SEE ROBERTSON DRAWINGS

**W16 - METAL ROOF (2/3/4)**  
 PREFIN. METAL ROOF PANELS ON  
 12" METAL BUILDING INSULATION ON  
 GALV. STEEL ROOF CURBS BY ROBERTSON ON  
 METAL LINER BASE SHEET ON  
 PRE-ENGINEERED METAL PURLINS (BY ROBERTSON)  
 -SEE ROBERTSON DRAWINGS

**W17 - METAL ROOF (2/3/4)**  
 PREFIN. METAL ROOF PANELS ON  
 12" METAL BUILDING INSULATION ON  
 GALV. STEEL ROOF CURBS BY ROBERTSON ON  
 METAL LINER BASE SHEET ON  
 PRE-ENGINEERED METAL PURLINS (BY ROBERTSON)  
 -SEE ROBERTSON DRAWINGS

**W18 - METAL ROOF (2/3/4)**  
 PREFIN. METAL ROOF PANELS ON  
 12" METAL BUILDING INSULATION ON  
 GALV. STEEL ROOF CURBS BY ROBERTSON ON  
 METAL LINER BASE SHEET ON  
 PRE-ENGINEERED METAL PURLINS (BY ROBERTSON)  
 -SEE ROBERTSON DRAWINGS

**W19 - METAL ROOF (2/3/4)**  
 PREFIN. METAL ROOF PANELS ON  
 12" METAL BUILDING INSULATION ON  
 GALV. STEEL ROOF CURBS BY ROBERTSON ON  
 METAL LINER BASE SHEET ON  
 PRE-ENGINEERED METAL PURLINS (BY ROBERTSON)  
 -SEE ROBERTSON DRAWINGS

**W20 - METAL ROOF (2/3/4)**  
 PREFIN. METAL ROOF PANELS ON  
 12" METAL BUILDING INSULATION ON  
 GALV. STEEL ROOF CURBS BY ROBERTSON ON  
 METAL LINER BASE SHEET ON  
 PRE-ENGINEERED METAL PURLINS (BY ROBERTSON)  
 -SEE ROBERTSON DRAWINGS

**W21 - METAL ROOF (2/3/4)**  
 PREFIN. METAL ROOF PANELS ON  
 12" METAL BUILDING INSULATION ON  
 GALV. STEEL ROOF CURBS BY ROBERTSON ON  
 METAL LINER BASE SHEET ON  
 PRE-ENGINEERED METAL PURLINS (BY ROBERTSON)  
 -SEE ROBERTSON DRAWINGS

**W22 - METAL ROOF (2/3/4)**  
 PREFIN. METAL ROOF PANELS ON  
 12" METAL BUILDING INSULATION ON  
 GALV. STEEL ROOF CURBS BY ROBERTSON ON  
 METAL LINER BASE SHEET ON  
 PRE-ENGINEERED METAL PURLINS (BY ROBERTSON)  
 -SEE ROBERTSON DRAWINGS

**W23 - METAL ROOF (2/3/4)**  
 PREFIN. METAL ROOF PANELS ON  
 12" METAL BUILDING INSULATION ON  
 GALV. STEEL ROOF CURBS BY ROBERTSON ON  
 METAL LINER BASE SHEET ON  
 PRE-ENGINEERED METAL PURLINS (BY ROBERTSON)  
 -SEE ROBERTSON DRAWINGS

**W24 - METAL ROOF (2/3/4)**  
 PREFIN. METAL ROOF PANELS ON  
 12" METAL BUILDING INSULATION ON  
 GALV. STEEL ROOF CURBS BY ROBERTSON ON  
 METAL LINER BASE SHEET ON  
 PRE-ENGINEERED METAL PURLINS (BY ROBERTSON)  
 -SEE ROBERTSON DRAWINGS

**W25 - METAL ROOF (2/3/4)**  
 PREFIN. METAL ROOF PANELS ON  
 12" METAL BUILDING INSULATION ON  
 GALV. STEEL ROOF CURBS BY ROBERTSON ON  
 METAL LINER BASE SHEET ON  
 PRE-ENGINEERED METAL PURLINS (BY ROBERTSON)  
 -SEE ROBERTSON DRAWINGS

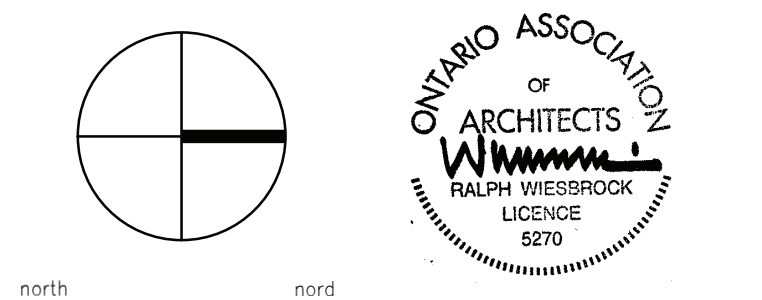
**W26 - METAL ROOF (2/3/4)**  
 PREFIN. METAL ROOF PANELS ON  
 12" METAL BUILDING INSULATION ON  
 GALV. STEEL ROOF CURBS BY ROBERTSON ON  
 METAL LINER BASE SHEET ON  
 PRE-ENGINEERED METAL PURLINS (BY ROBERTSON)  
 -SEE ROBERTSON DRAWINGS

**W27 - METAL ROOF (2/3/4)**  
 PREFIN. METAL ROOF PANELS ON  
 12" METAL BUILDING INSULATION ON  
 GALV. STEEL ROOF CURBS BY ROBERTSON ON  
 METAL LINER BASE SHEET ON  
 PRE-ENGINEERED METAL PURLINS (BY ROBERTSON)  
 -SEE ROBERTSON DRAWINGS

**W28 - METAL ROOF (2/3/4)**  
 PREFIN. METAL ROOF PANELS ON  
 12" METAL BUILDING INSULATION ON  
 GALV. STEEL ROOF CURBS BY ROBERTSON ON  
 METAL LINER BASE SHEET ON  
 PRE-ENGINEERED METAL PURLINS (BY ROBERTSON)  
 -SEE ROBERTSON DRAWINGS

**W29 - METAL ROOF (2/3/4)**  
 PREFIN. METAL ROOF PANELS ON  
 12" METAL BUILDING INSULATION ON  
 GALV. STEEL ROOF CURBS BY ROBERTSON ON  
 METAL LINER BASE SHEET ON  
 PRE-ENGINEERED METAL PURLINS (BY ROBERTSON)  
 -SEE ROBERTSON DRAWINGS

1	RESPONSE TO CITY COMMENTS	12 MAR 2018
0	ISSUED FOR PERMIT	08 FEB 2018
no.	revision	date



**kwc** 383 Parkdale Avenue, Suite 201  
 Ottawa Ontario Canada K1Y 4R4

**KWC ARCHITECTS INC.**

PHONE (613) 238-2117  
 FAX (613) 238-6595  
 E-MAIL kwc@kwc-arch.com

detail no.	1	detail no.
sheet no.	A1	feuille no.

**PROPOSED AUTOMOBILE DEALERSHIP**

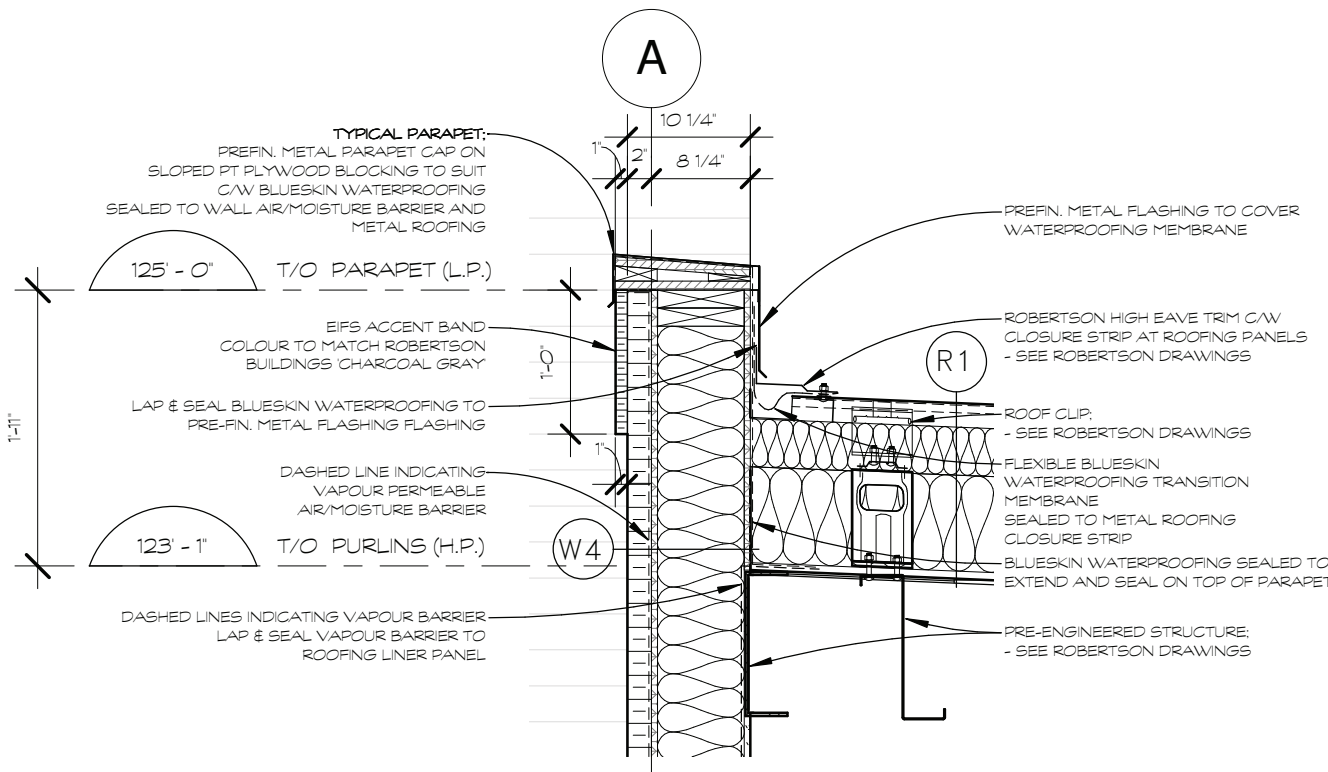
5835 HAZELDEAN RD.  
 OTTAWA, ON.

designed by	conip por	approved by	approved por	RW
drawn by	desain por	project no.	no. de projet	
date	08 FEBRUARY 2018	scale	as noted	

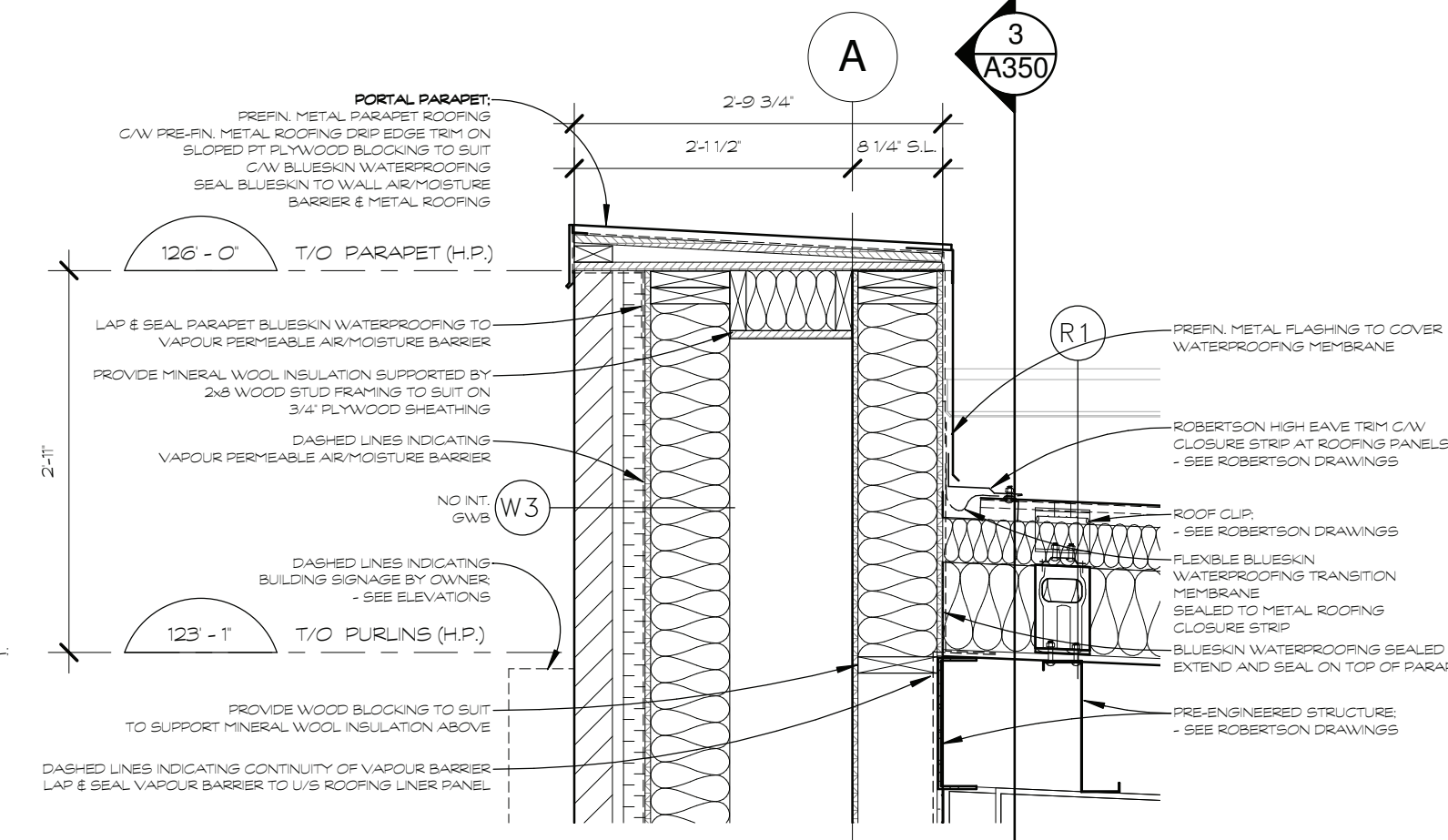
**BUILDING SECTIONS**

revision / dessin

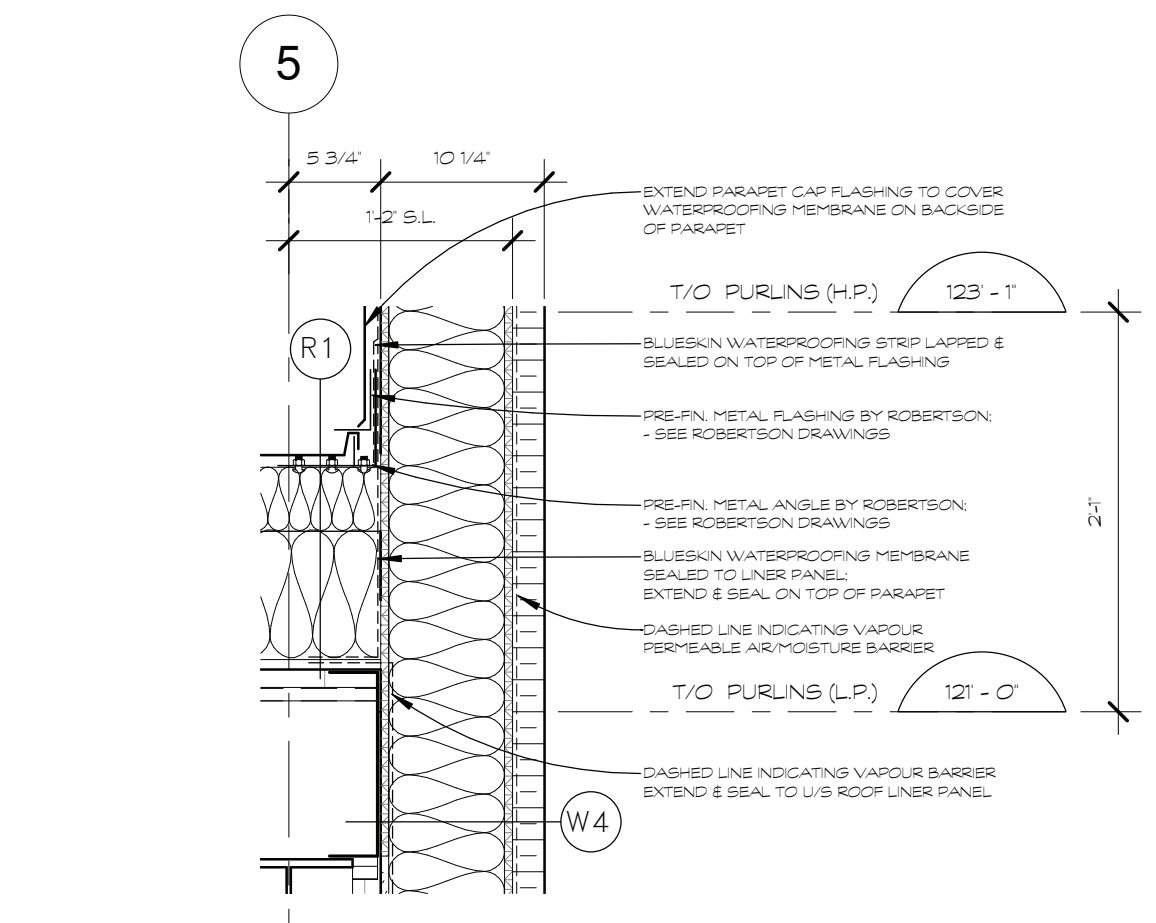
sheet no. A300  
 no. de feuille



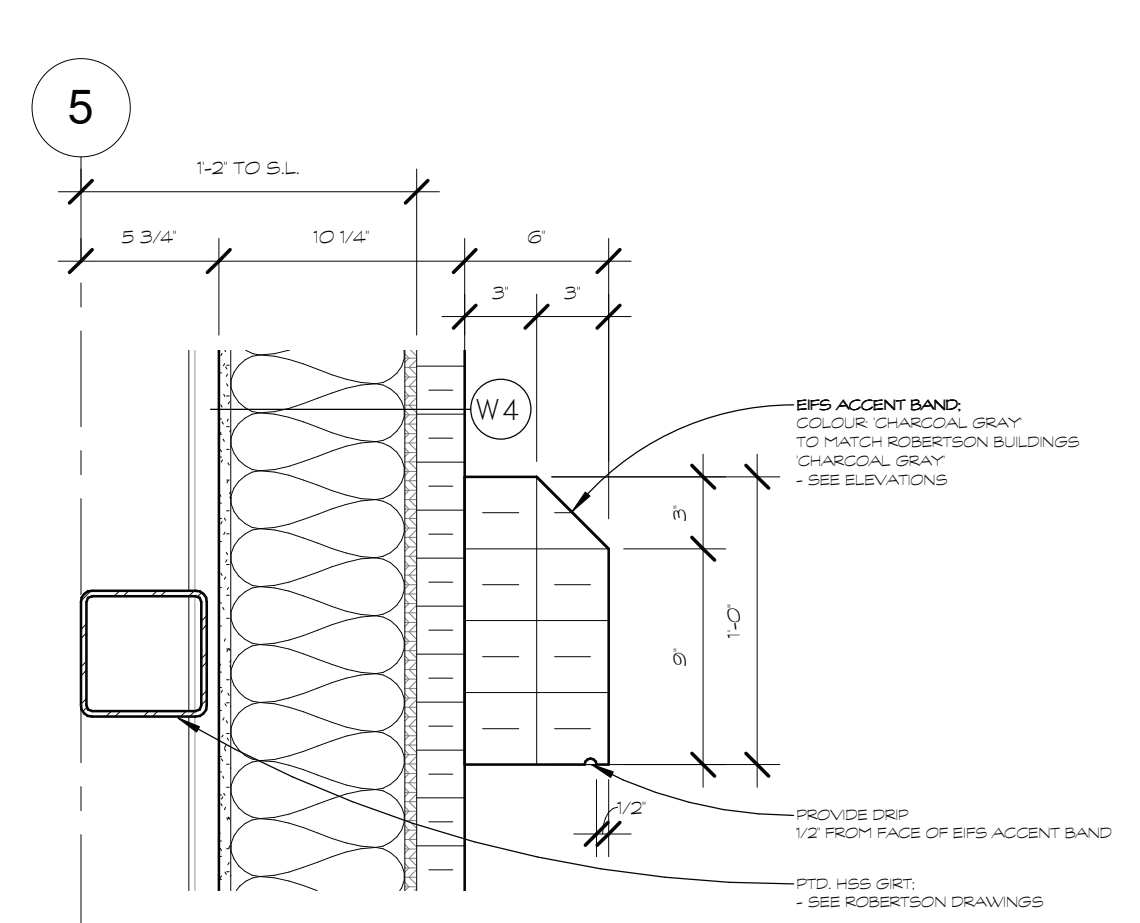
1 DETAIL @ TYPICAL PARAPET  
A501 SCALE 3/4" = 1'-0"



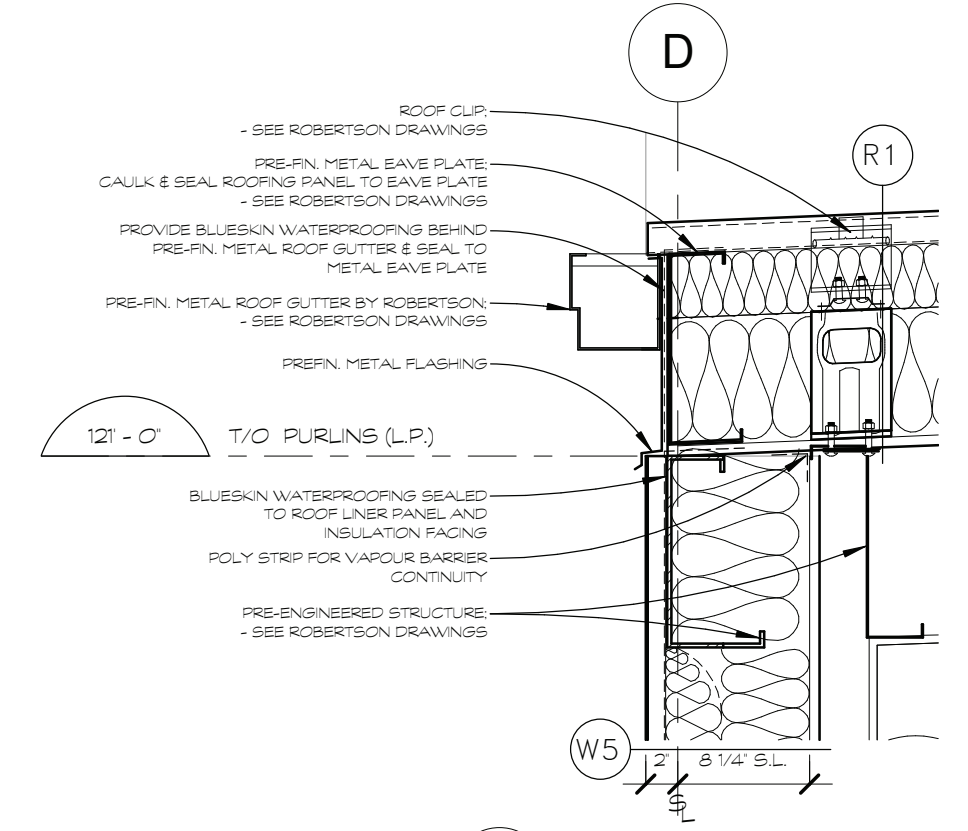
2 DETAIL @ PORTAL PARAPET  
A501 SCALE 3/4" = 1'-0"



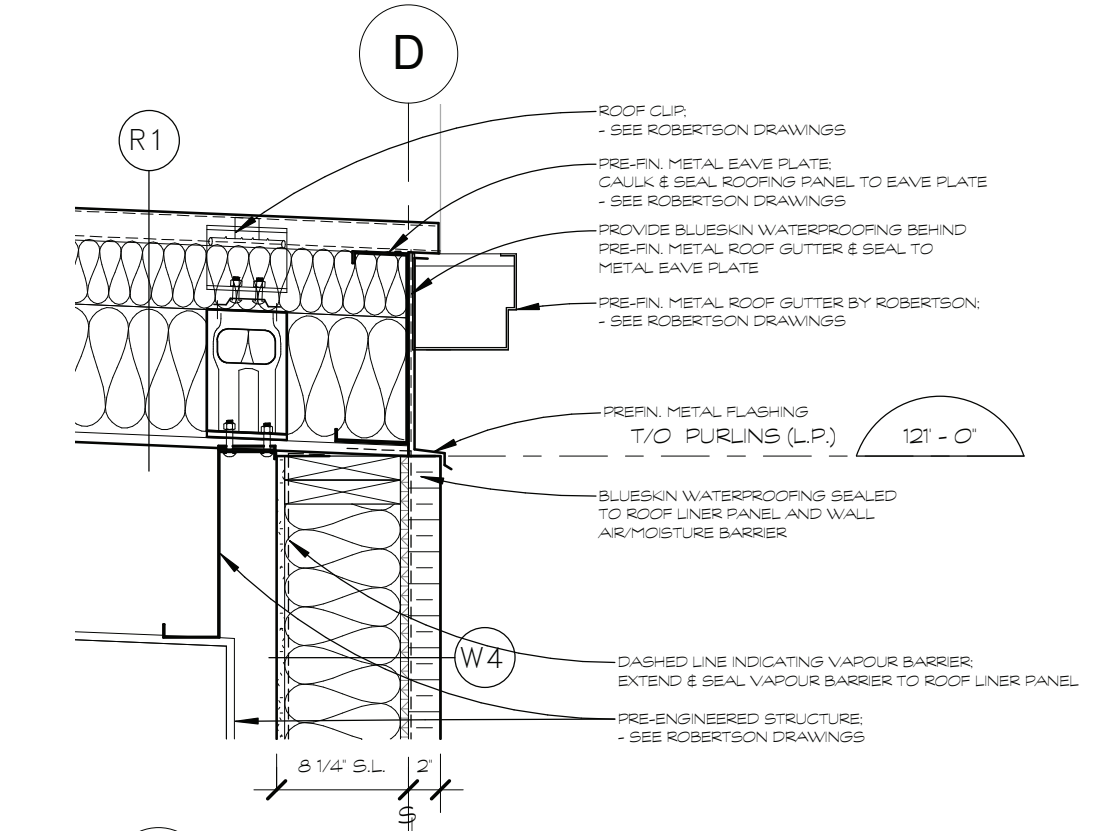
5 CONTINUITY OF BARRIERS @ ENDWALL  
A501 SCALE 1" = 1'-0"



6 DETAIL @ TYPICAL EIFS ACCENT BAND  
A501 SCALE 1 1/2" = 1'-0"



3 EAVE DETAIL @ W5  
A501 SCALE 1" = 1'-0"



4 EAVE DETAIL @ W4  
A501 SCALE 1" = 1'-0"

**TYPICAL WALL, PARTITION, FLOOR & ROOF CONSTRUCTION ASSEMBLIES**

- TYPICAL EXTERIOR WALL CONSTRUCTIONS**  
SEE ALSO NOTES BELOW FOR FIRESTOPPING AND FOR CBC ENERGY EFFICIENCY STANDARDS. COMPLY WITH TABLE 2112.2.A COMPLIANCE PACKAGE 9
- W1 - CONCRETE FOUNDATION WALL (2')**  
12" CONCRETE  
3" RIGID INSULATION TO 2'-0" BELOW GRADE @ ALL PERIMETERS
  - W2 - STONE VENEER WALL (4'-1.5')**  
STONE VENEER ON  
1" MIN. AIR SPACE  
2" RIGID INSULATION ON  
VAPOUR PERMEABLE AIR/MOISTURE BARRIER (COMPATIBLE WITH EIFS SYSTEM) ON  
7/8" OSB SHEATHING ON  
2x8 WOOD STUD FRAMING @ 16" MAX. O/C  
POLY. VAPOUR BARRIER  
1/2" PTD. GWB
  - W3 - BRICK VENEER WALL (4'-1.5')**  
BRICK VENEER ON  
1" MIN. AIR SPACE  
2" RIGID INSULATION ON  
VAPOUR PERMEABLE AIR/MOISTURE BARRIER (COMPATIBLE WITH EIFS SYSTEM) ON  
7/8" OSB SHEATHING ON  
2x8 WOOD STUD FRAMING @ 16" MAX. O/C  
POLY. VAPOUR BARRIER  
1/2" PTD. GWB
  - W4 - EIFS WALL (0 TO 7/8')**  
EIFS (DRYVIT INSULATION PLUS NC, OR SIMILAR) COLOUR: BEIGE ON  
2" EIFS INSULATION  
C/W INTEGRAL DRAINAGE PLANE, ADHERED ON  
VAPOUR PERMEABLE AIR/MOISTURE BARRIER (COMPATIBLE WITH EIFS SYSTEM) ON  
7/8" OSB SHEATHING ON  
2x8 WOOD STUD FRAMING @ 16" MAX. O/C  
POLY. VAPOUR BARRIER  
1/2" PTD. GWB
  - W5 - METAL SIDING WALL (0 TO 3/4')**  
PRE-FIN. METAL SIDING PANEL (SEE ROBERTSON DRAWINGS) ON  
3 1/2" FACED METAL BUILDING INSULATION  
C/W TAPED SEAMS FOR CONTINUOUS AIR BARRIER ON  
HORIZONTAL SITES (SEE ROBERTSON DRAWINGS)  
5 1/2" BATT INSULATION  
INTERIOR PRE-FIN. METAL LINER PANEL

**TYPICAL INTERIOR PARTITION CONSTRUCTIONS**

- SEE ALSO NOTES BELOW FOR FIRESTOPPING
- P1 - DEHISING PARTITION (8')**  
FRR REQUIRED 2-HR  
FRR PROVIDED 2-HR ULC U301  
2 LAYERS OF 5/8" FRECCO C GWB  
SCREW ATTACHED JOINTS STAGGERED, ON BOTH SIDES OF  
2x8 WOOD STUD FRAMING @ 16" MAX. O/C  
C/W 5 1/2" MINERAL WOOL INSULATION WITHIN STUD CAVITY
  - P2 - GENERAL PARTITION (4 1/2')**  
1/2" PTD. GWB ON  
2x4 WOOD STUD FRAMING TO SUIT  
1/2" PTD. GWB
  - P3 - GENERAL PARTITION (4')**  
1/2" PTD. GWB (ONLY ON INTERIOR SIDE OF STUD) ON  
2x4 WOOD STUD FRAMING TO SUIT
  - P4 - GENERAL PARTITION (6 1/2')**  
1/2" PTD. GWB ON  
2x8 WOOD STUD FRAMING TO SUIT  
1/2" PTD. GWB

**TYPICAL FLOOR CONSTRUCTIONS**

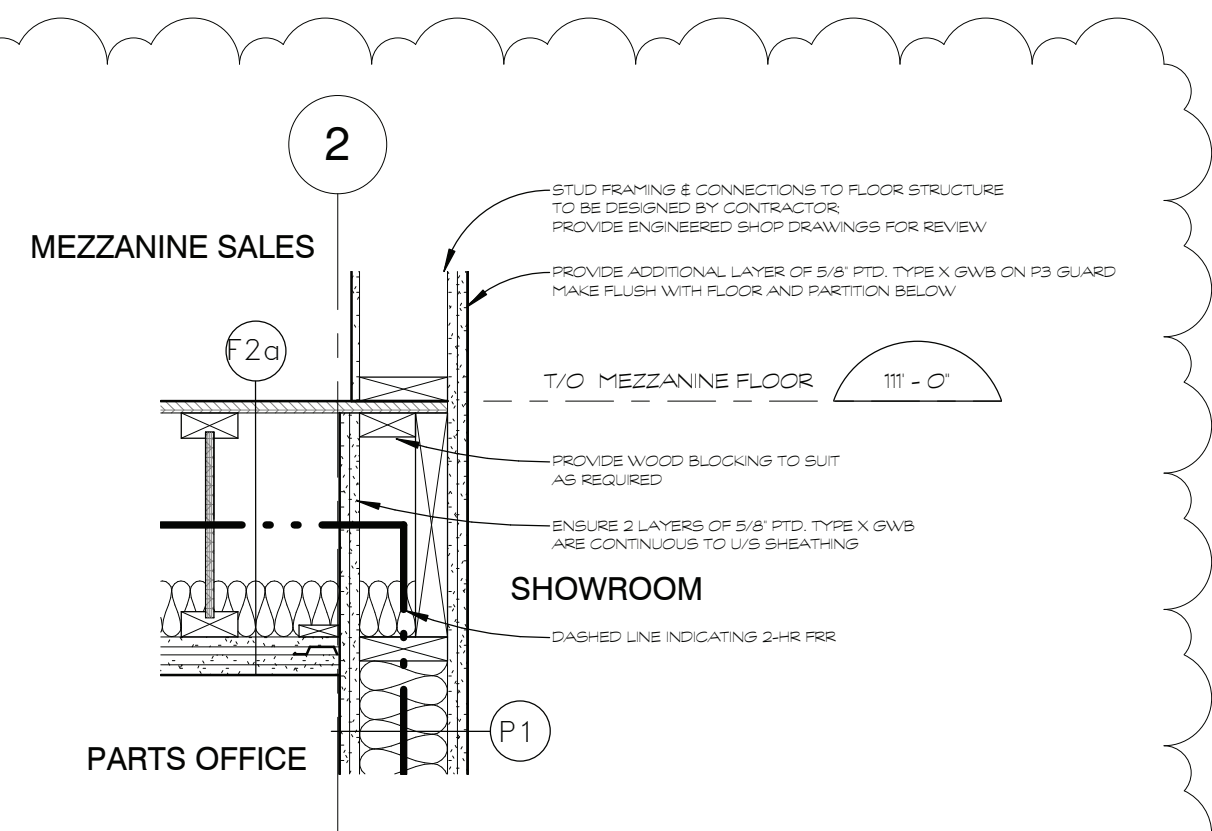
- FOR CBC ENERGY EFFICIENCY STANDARDS, COMPLY WITH TABLE 2112.2.A COMPLIANCE PACKAGE 9
- F1 - CONCRETE SLAB-ON-GRADE**  
8" REINFORCED FLOURED CONCRETE SLAB ON  
COMPACTED GRANULAR BACKFILL  
-SEE STRUCTURAL DRAWINGS
  - F2 - WOOD FRAMED MEZZANINE**  
3/4" OSB SUBFLOOR ON  
1" ENGINEERED WOOD JOISTS @ 16" MAX. O/C  
C/W 3 1/2" GLASS FIBRE INSULATION  
FLUORING STRIPS @ 24" MAX. O/C  
1/2" PTD. GWB
  - F2a - 2-HR FRR WOOD FRAMED MEZZANINE**  
FRR REQUIRED 2-HR  
FRR PROVIDED 2-HR ULC UL L558  
3/4" OSB SUBFLOOR ON  
1" ENGINEERED WOOD JOISTS @ 16" MAX. O/C  
C/W 3 1/2" GLASS FIBRE INSULATION  
5/8" BASE LAYER FRECCO C GWB, TAPED & SANDED  
RESISTENT CHANNELS @ 16" O/C  
2 LAYERS 5/8" FRECCO C GWB, TAPED & SANDED

**TYPICAL ROOF CONSTRUCTIONS**

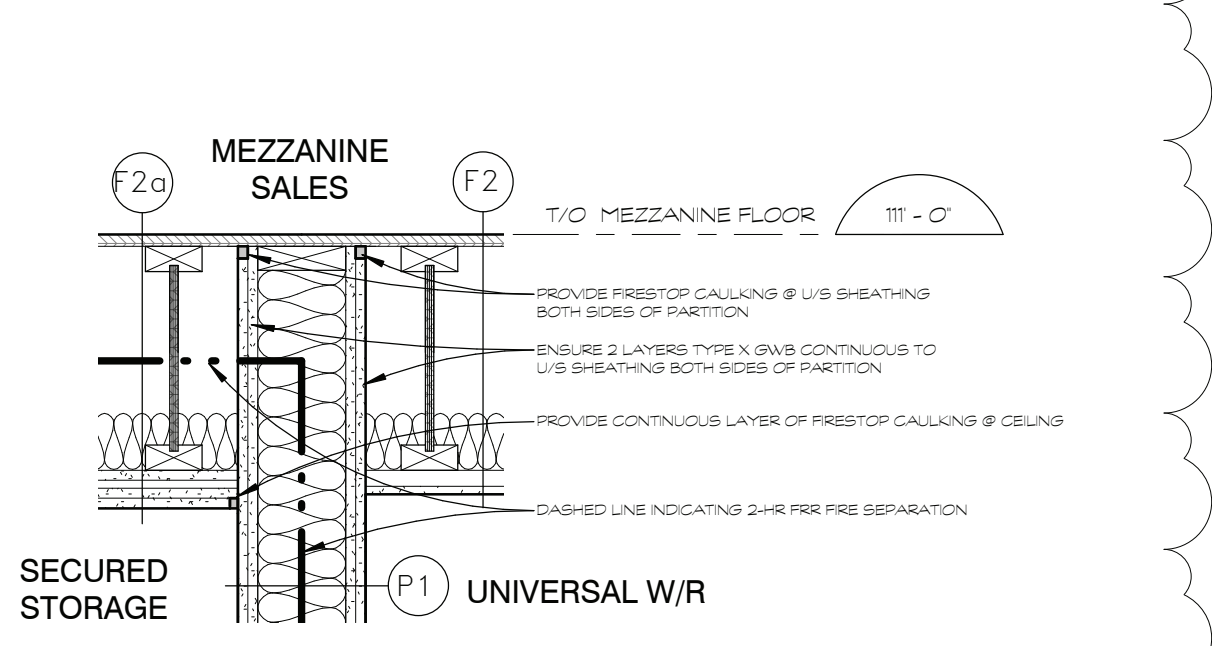
- R1 - METAL ROOF**  
PRE-FIN. METAL SPANING BEAM ROOF PANELS ON  
12" METAL BUILDING INSULATION ON  
GALV. STEEL ROOF CLIPS (BY ROBERTSON) ON  
METAL LINER BASE SHEET ON  
PRE-ENGINEERED METAL PURLINS (BY ROBERTSON)  
-SEE ROBERTSON DRAWINGS

**FIRESTOPPING**

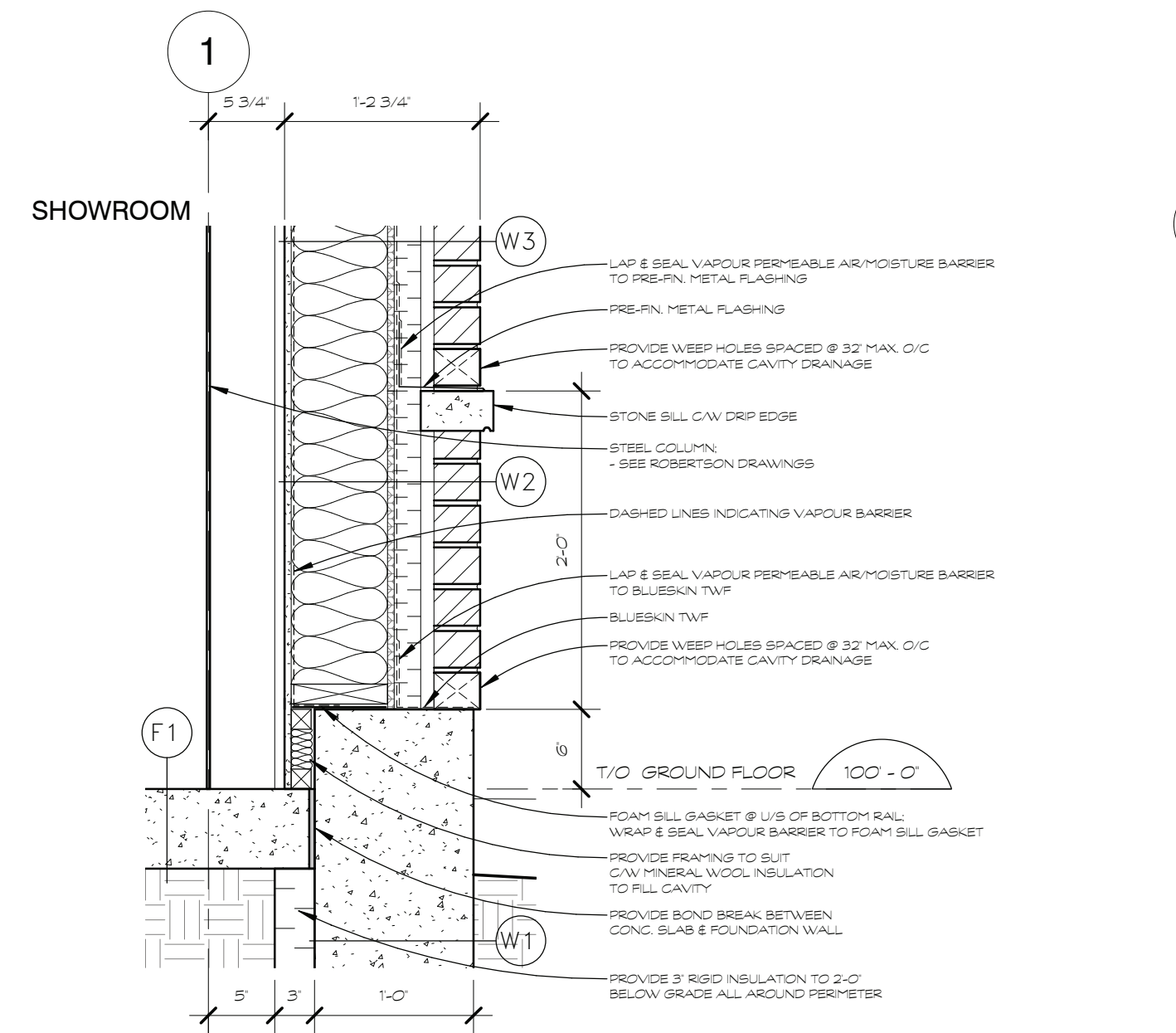
- FRSSTOP ALL FLOOR WALL/PARTITION FIRE SEPARATIONS AT ALL ROOF DECKS, BEAMS, JOISTS, PLANKING WALL, ETC. WITH ULC APPROVED MATERIALS & SYSTEMS.  
NO GAP TO BE GREATER THAN 2 INCHES.  
ALL GAPS LESS THAN 5/8" - CALK.  
ALL GAPS GREATER THAN 5/8" - EMPLOY COMPRESSED MINERAL WOOL FILL AND APPROVED SEALING MATERIAL BOTH SIDES.  
STANDARD OF ACCEPTANCE:  
MINERAL WOOL - HLT THERMABAR (S&S)  
CALK/SEALANT - HLT GPOB, HLT GPOB OR HLT FS ONE



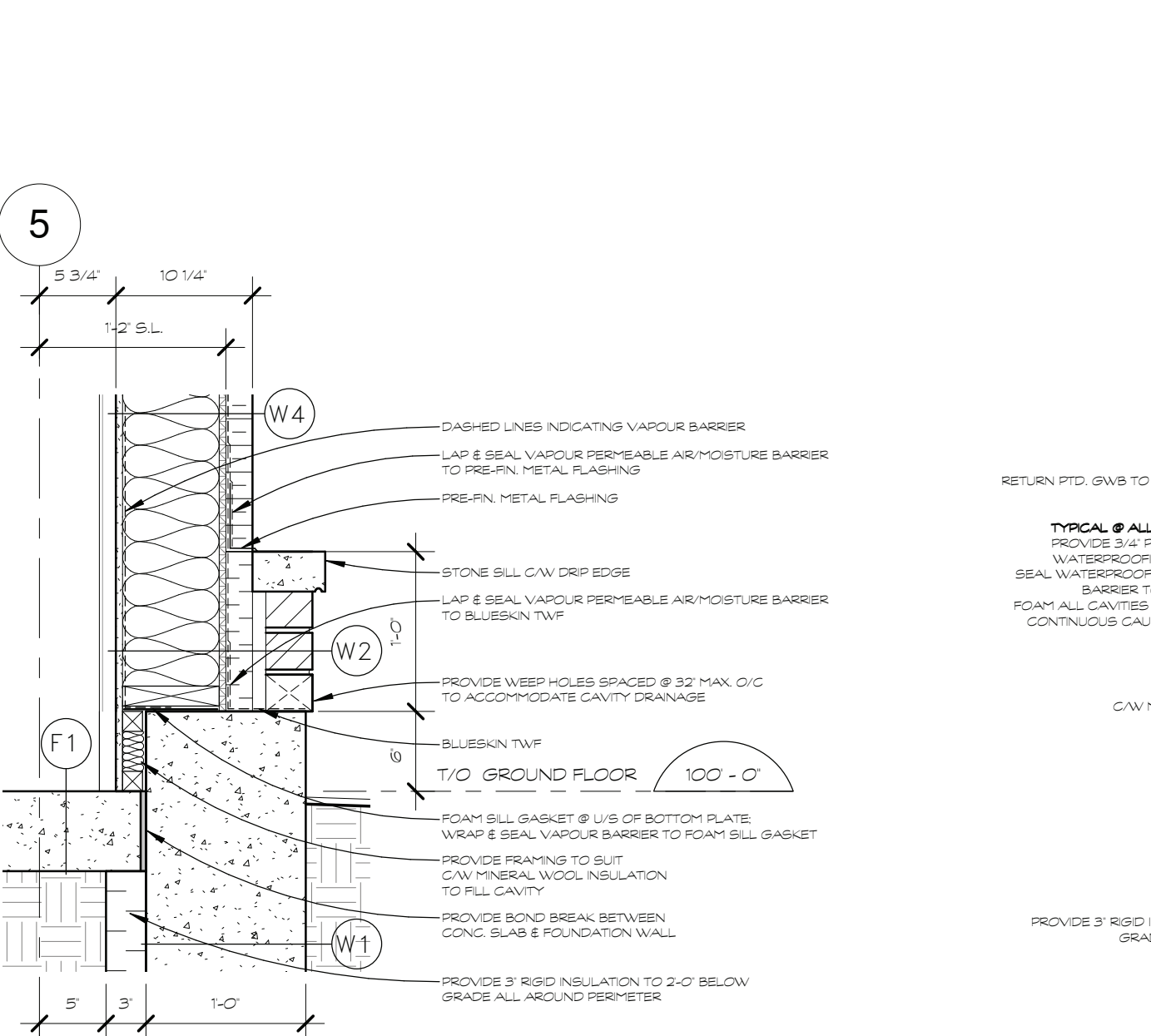
10 DETAIL @ FRR CONTINUITY  
A501 SCALE 1" = 1'-0"



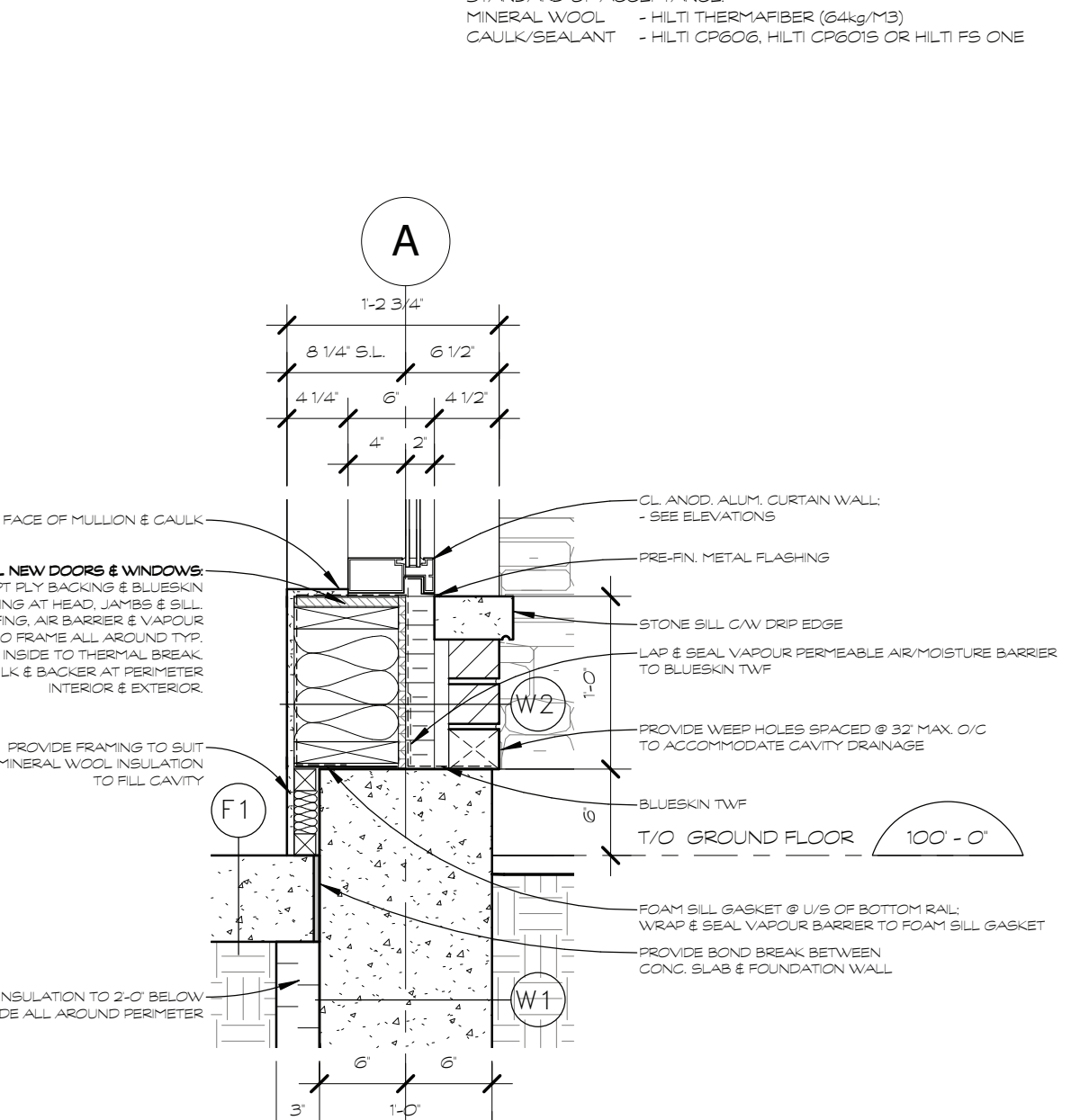
11 DETAIL @ FRR CONTINUITY 2  
A501 SCALE 1" = 1'-0"



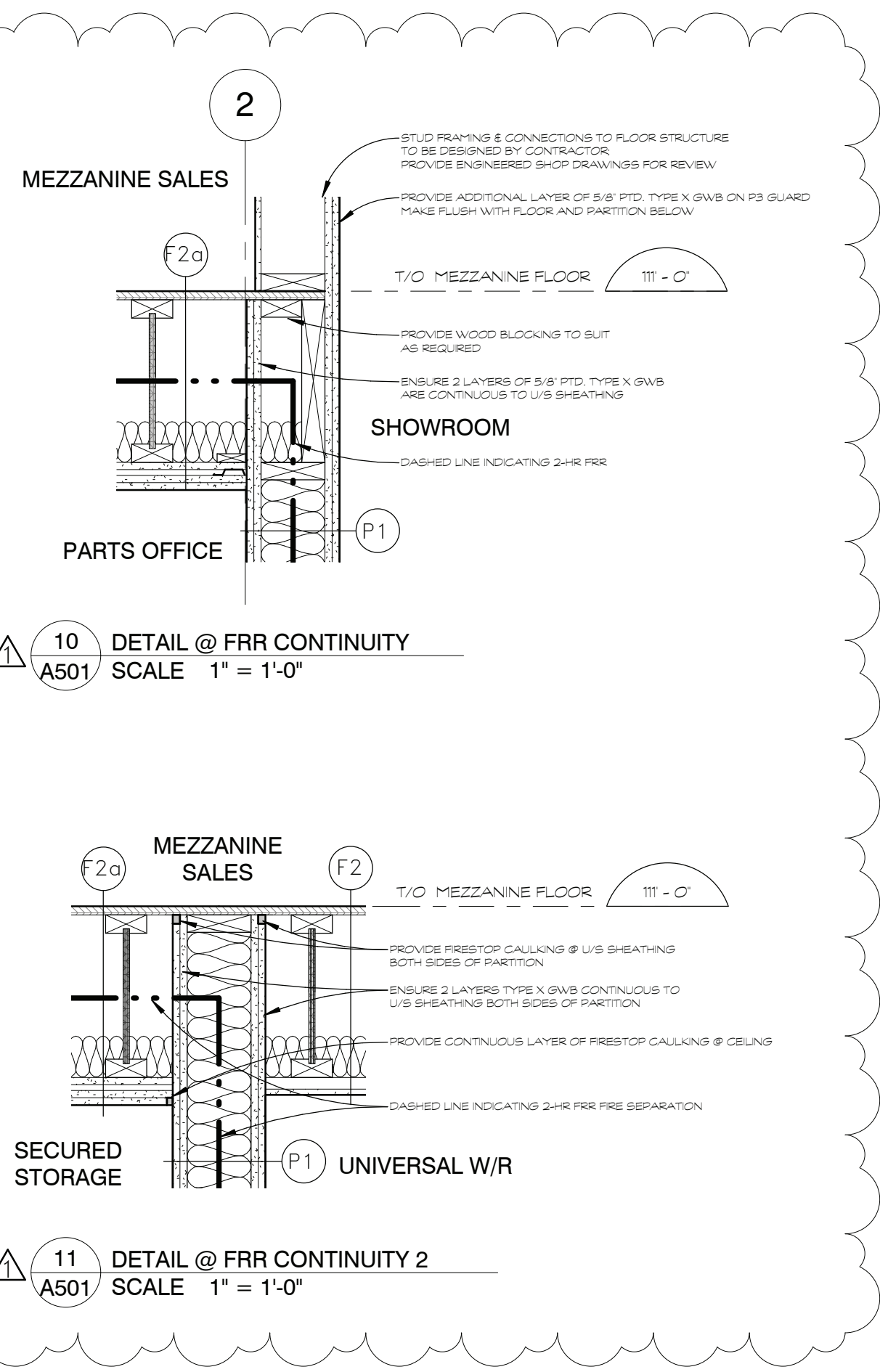
7 BASE DETAIL @ W2/W3  
A501 SCALE 1" = 1'-0"



8 BASE DETAIL @ W2/W4  
A501 SCALE 1" = 1'-0"



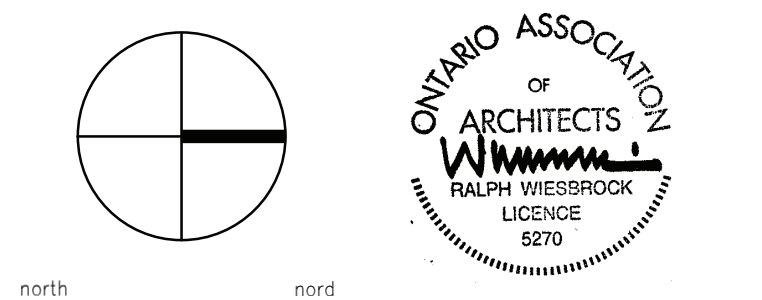
9 BASE DETAIL @ W2/CURTAIN WALL  
A501 SCALE 1" = 1'-0"



**NOTES:**

Contractor shall check and verify all dimensions on site and report any discrepancies to the Architect before proceeding.

1	RESPONSE TO CITY COMMENTS	12 MAR 2018
0	ISSUED FOR PERMIT	08 FEB 2018
no.	revision	date



**kwc** 383 Parkdale Avenue, Suite 201  
Ottawa Ontario Canada K1Y 4R4

**KWC ARCHITECTS INC.**

PHONE (613) 238-2117  
FAX (613) 238-6595  
E MAIL kwc@kwc-arch.com

detail no.	1	detail no.
sheet no.	A1	feuille no.
project		projet

**PROPOSED AUTOMOBILE DEALERSHIP**

5835 HAZELDEAN RD.  
OTTAWA, ON.

designed by	---	approved by	---
drawn by	TC	project no.	---
date	08 FEBRUARY 2018	scale	as noted
drawing / dessin			

**SECTION DETAILS**

revision / révision sheet no. / no. de feuille **A501**

plot scale 1:1

SHEET SIZE: ARCH D (24"x36")