

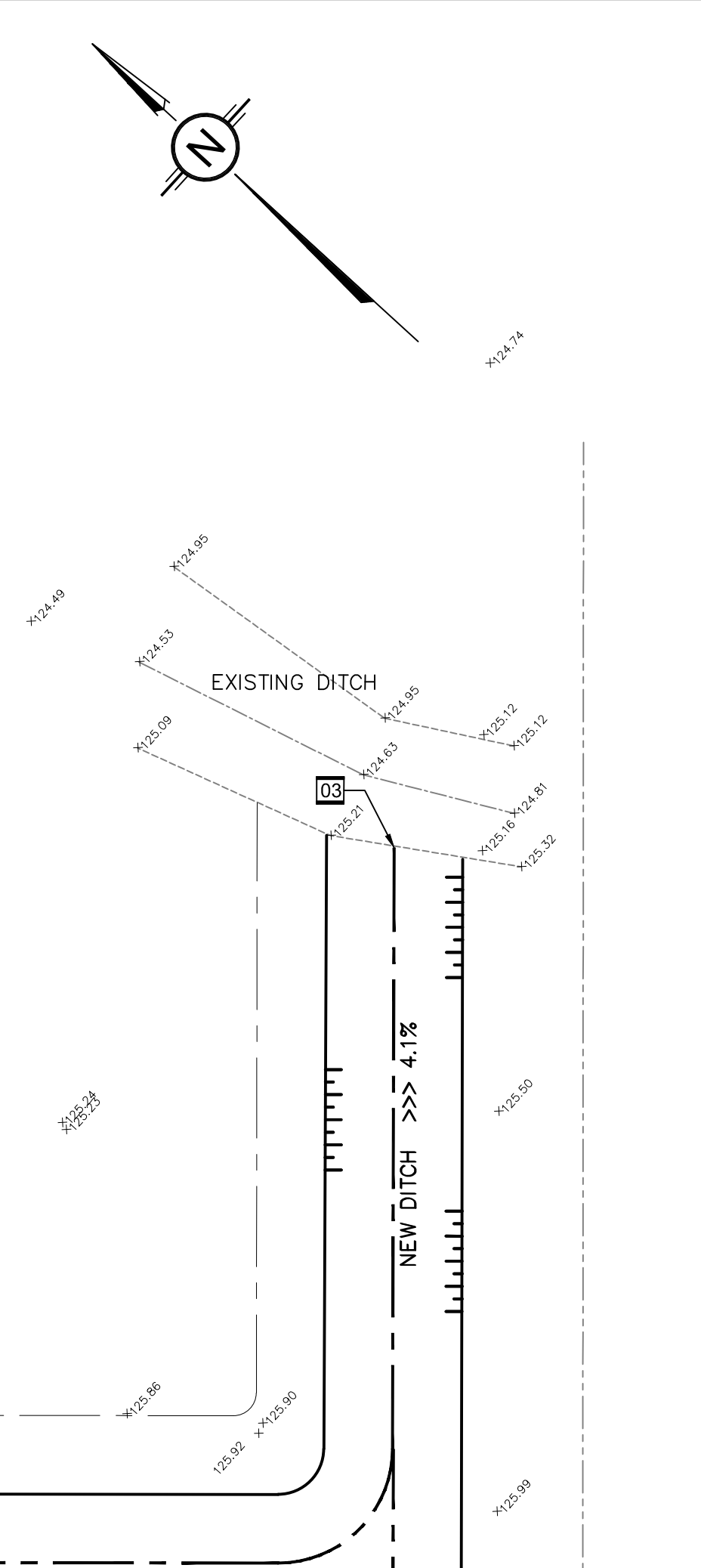
3 STANDARD TRENCH c/w THERMAL INSULATION DETAIL  
SCALE: N.T.S.

- GENERAL NOTES**
- DESIGN AND CONSTRUCTION IS TO BE IN ACCORDANCE WITH MOST RECENT ONTARIO BUILDING CODE
  - THE CONTRACTOR IS RESPONSIBLE FOR CHECKING AND VERIFYING ALL DIMENSIONS WITH RESPECT TO SITE CONDITIONS AND ALL MATERIALS TO THE PROJECT. ANY DISCREPANCY SHALL BE REPORTED TO THE ENGINEER.
  - THIS DRAWING IS TO BE READ IN CONJUNCTION WITH ALL MATERIAL RELEVANT TO THE PROJECT.
  - ADDITIONAL DRAWINGS MAY BE ISSUED FOR CLARIFICATION TO ASSIST PROPER EXECUTION OF WORK. SUCH DRAWINGS WILL HAVE THE SAME MEANING AND INTENT AS IF THEY WERE INCLUDED WITH THE CONTRACT DOCUMENTS.
  - DO NOT SCALE DRAWINGS.
  - CONTRACTOR MUST COMPLY WITH LOCAL BY-LAWS, CANADIAN CONSTRUCTION SAFETY CODE AND ALL REGULATIONS SET BY AUTHORITIES HAVING JURISDICTION. IN CASE OF CONFLICT OR DISCREPANCY, THE MORE STRINGENT REQUIREMENTS SHALL APPLY.
  - CONTRACTOR RESPONSIBLE FOR OBTAINING ALL REQUIRED UTILITY LOCATES, INSPECTIONS, PERMITS, AND APPROVALS, INCLUDING ALL ASSOCIATED COSTS. LOCATION OF EXISTING UTILITIES ARE APPROXIMATE ONLY AND BASED ON BEST AVAILABLE INFORMATION.

**CATCHBASIN / MANHOLE SCHEDULE**

STRUCTURE ID	TOP OF FRAME ELEVATION (m)	PIPE INVERT ELEVATION (m)	STRUCTURE SIZE (mm) / OPSD #	FRAME
EXIST. CBMH-1W	129.33	128.10	N/A	N/A
EXIST. CBMH-1E	129.33	128.09	N/A	N/A
EXIST. CBMH-1A W	129.28	127.85	N/A	N/A
EXIST. CBMH-1A E	129.28	127.82	N/A	N/A
NEW CBMH-3 W	129.20	127.62	1200 / 701.010	401.010 B
NEW CBMH-3 E	129.20	127.59	1200 / 701.010	401.010 B
EXIST. CB W	129.42	127.85	N/A	401.030
EXIST. CB E	130.42	127.82	N/A	401.030
EXIST. CBMH-2 W	129.30	127.54	N/A	401.030
EXIST. CBMH-2 E	130.30	127.51	N/A	401.030
NEW CBMH-4 W	129.20	127.33	1200 / 701.010	401.010 B
NEW CBMH-4 SW	129.20	127.38	1200 / 701.010	401.010 B
NEW CBMH-4 E	129.20	127.30	1200 / 701.010	401.010 B
DITCH OUTLET (NORTH)	N/A	127.15	N/A	N/A
SAN @ BUILDING	N/A	127.81	N/A	N/A
EXIST. SMH-2 N	129.00	127.21	N/A	N/A
EXIST. SMH-2 W	129.00	127.18	N/A	N/A
NEW SMH-3 S	129.30	127.41	1200 / 701.010	401.010 A
NEW SMH-3 E	129.30	127.44	1200 / 701.010	401.010 A
EXIST. MH-EX	129.280	126.930	N/A	N/A

- GEOTECHNICAL NOTES**
- A GEOTECHNICAL ENGINEER LICENSED IN THE PROVINCE OF ONTARIO SHALL INSPECT ALL SUBGRADE SURFACES FOR FOOTING AND PAVEMENT STRUCTURES PRIOR TO CONSTRUCTION.
- EROSION CONTROL**
- THE CONTRACTOR SHALL IMPLEMENT BEST MANAGEMENT PRACTICES TO PROVIDE FOR PROTECTION OF THE AREA DURING CONSTRUCTION ACTIVITIES. THIS INCLUDES LIMITING THE AMOUNT OF EXPOSED SOIL, USING FILTER CLOTH UNDER THE GRATES OF CATCHBASINS AND MANHOLES AND INSTALLING SILT FENCES AND OTHER EFFECTIVE SEDIMENT TRAPS.
  - ALL STORM MANHOLES TO HAVE 600mm SUMP.
- PROTECTION OF PIPING**
- PROTECT ALL NEW PIPING IN ACCORDANCE WITH MOST RECENT BUILDING CODE (ONTARIO BUILDING CODE 7.3.5).



- LEGEND**
- MH MAINTENANCE HOLE
  - PROPERTY LINE
  - SAN EXISTING SANITARY LINE
  - SAN NEW SANITARY LINE
  - STM EXISTING STORM LINE
  - STM NEW STORM LINE
  - W EXISTING WATERMAIN
  - W NEW WATERMAIN
  - LIMITS OF STORMWATER DRAINAGE AREA
  - HYD EXISTING OVERHEAD HYDRO LINE
  - DUCT EXISTING UNDERGROUND DUCT FOR TELEPHONE LINE
  - WV NEW WATER VALVE BOX
  - CBMH NEW CATCHBASIN MANHOLE
  - CB NEW CATCHBASIN
  - SMH NEW SANITARY MANHOLE
  - PROPOSED ELEVATION
  - EXISTING ELEVATION
  - SILT FENCE (OPSD 219.110)
  - NEW 6" CONCRETE CURB (OPSD 600.110)
  - PROPOSED SURFACE DRAINAGE
  - EXISTING SURFACE DRAINAGE
  - EMERGENCY MAJOR OVERLAND DRAINAGE
  - REMOTE WATER METER
  - WATER METER
  - EXISTING FIRE HYDRANT
  - NEW LIGHT DUTY ASPHALT
  - NEW HEAVY DUTY ASPHALT

NO.	DESCRIPTION	DATE
1	SITE PLAN CONTROL	DEC-14-2017
2	SITE PLAN CONTROL R1	FEB-09-2018
3	SITE PLAN CONTROL R2	FEB-13-2018
4	SITE PLAN CONTROL R3	FEB-15-2018
5	PERMIT / TENDER	FEB-20-2018
6		
7		
8		
9		
10		

It is the responsibility of the appropriate Contractor to verify all dimensions on site and report all errors and/or omissions to the Architect.  
All Contractors must comply with pertinent codes & by-laws.  
Do not scale drawings. This drawing may not be used for construction until signed. Architect's copyright reserved.

- DRAWING NOTES**
- REMOVE AND DISCARD EXISTING SANITARY MANHOLE. EXTEND SANITARY SEWER TO CONNECT EXISTING SEWER SECTIONS.
  - PROTECT EXISTING STORM STRUCTURE AND ASSOCIATED STORM SEWERS DURING CONSTRUCTION. REPLACE EXISTING COVER WITH NEW WATERTIGHT COVER. TOP OF GRATE ELEVATION TO BE ADJUSTED AS INDICATED.
  - REMOVE AND DISCARD STORM SEWER.
  - PROTECT EXISTING WATER SERVICE. DEPTH TO BE CONFIRMED BY CONTRACTOR DURING CONSTRUCTION. COORDINATE WITH ARCHITECTURAL AND STRUCTURAL DRAWINGS.
  - PROTECT AND SLEEVE EXISTING SANITARY SERVICE. DEPTH TO BE CONFIRMED BY CONTRACTOR DURING CONSTRUCTION. COORDINATE WITH ARCHITECTURAL AND STRUCTURAL DRAWINGS.
  - INSTALL FLOW RESTRICTOR. MAXIMUM DISCHARGE 45.0 LITRES / SEC. APPROXIMATE HEAD: 1.80m.
  - INSTALL NEW SANITARY MANHOLE OVER EXISTING 150mm Ø SANITARY SEWER. CONNECT EXISTING 150mm Ø SANITARY SEWER AND PROVIDE WATERTIGHT CONNECTION. THE EXISTING 150mm Ø SANITARY SEWER SHALL BE CUT TO INSTALL MANHOLE WITH BENCHING. (APPROX INVERT 127.41).
  - INVERTS TO BE CONFIRMED BY CONTRACTOR.
  - INSTALL RIP-RAP TREATMENT AS PER OPSD 810.010.
  - REMOVE EXISTING RIP RAP AND DISPOSE OFF-SITE.
  - SUPPLY AND INSTALL NEW DOUBLE (2) 12m X 400mm Ø @ 1.0% SLOPE, 2mm THICK CSP CULVERT. PER OPSD 805.010 AND OPSD 803.030.
  - CORE NEW OUTLET IN EXISTING STORM MANHOLE AND CONNECT NEW 250mm Ø STORM SEWER TO EXISTING STORM MANHOLE. PLUG EXISTING OUTLET AND PROVIDE WATERTIGHT SEAL.
  - REMOVE AND RELOCATE EXISTING STORM CATCHBASIN MANHOLE. CORE NEW OUTLET IN EXISTING STORM MANHOLE AND CONNECT NEW 250mm Ø STORM SEWER TO EXISTING STORM MANHOLE. PLUG EXISTING OUTLET AND PROVIDE WATERTIGHT SEAL.
  - INSTALL PURPOSE-MADE HINGED RODENT GRATE AT PIPE END. MAX. OPENING 20mm.
  - INSTALL ONE LAYERS OF 25mm HIGH LOAD 40 INSULATION.
  - INSTALL TWO LAYERS OF 25mm HIGH LOAD 40 INSULATION.
  - INSTALL FIVE LAYERS OF 25mm HIGH LOAD 40 INSULATION.
  - PROTECT EXISTING DUCT BANK LOCATED APPROXIMATELY 1.0m BELOW GRADE.
  - REMOVE EXISTING STORM SEWER. REPLACE WITH NEW 250mm Ø STORM SEWER AT APPROX. INVERT ELEVATION 128.06. CONTRACTOR TO CONFIRM EXISTING INVERT ELEVATION AT EXISTING BUILDING PRIOR TO CONSTRUCTION.
  - INSTALL 3.0m LONG, 100mm Ø PERFORATED SUB-DRAIN WRAPPED IN GEOTEXTILE SOCK, EXTENDING FROM CATCHBASIN MANHOLES AT PAVEMENT SUB-GRADE LEVEL.

**PROFESSIONAL ENGINEER**  
R. L. TUBBS  
10005727  
FEB. 20, 2018  
PROVINCE OF ONTARIO

**Jp2g Consultants Inc.**  
ENGINEERS - PLANNERS - PROJECT MANAGERS  
12 INTERNATIONAL DRIVE, PEMBROKE, ON  
Phone: (613)735-2507, Fax: (613)735-4513  
1150 MORRISON DRIVE, SUITE 410, OTTAWA, ON  
Phone: (613)828-7800, Fax: (613)828-2000  
REF# 17-5109A

Client:

**Mills Community Support Corporation**  
67 Industrial Drive, Almonte, ON  
613-256-1031

Architect:

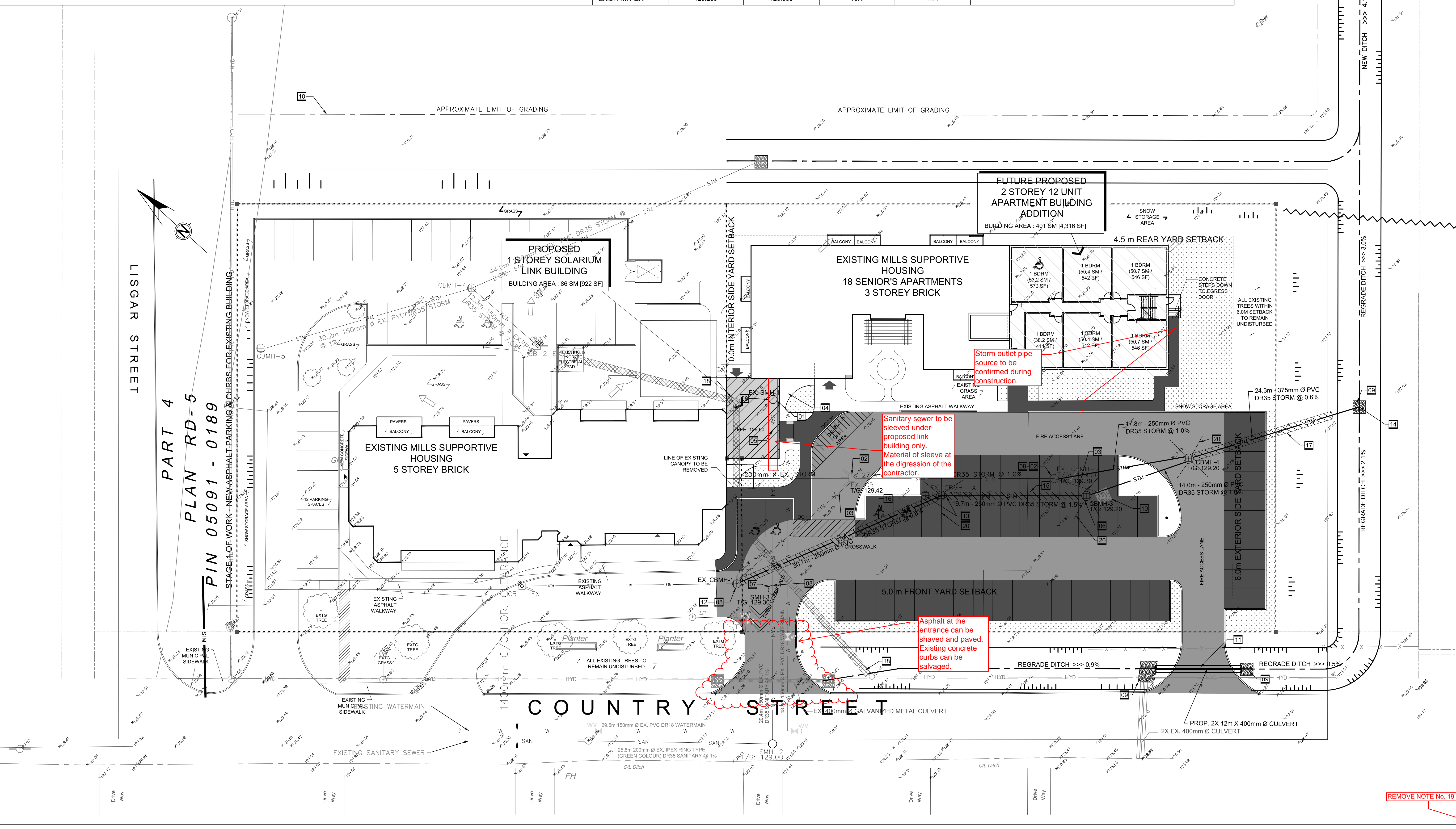
**Peter Mansfield, Architect**  
B. Tech., M. Arch., O.A.A.  
122 Bridge Street, Almonte, ON  
613-256-5213

Consultants:  
Structural Engineering  
Cleland Jarvie Engineering Ltd.  
Suite 200 - 580 Terry Fox Drive  
Kanata ON K2L 4B9 613-591-1533  
Civil Engineering  
Jp2g Consultants Inc.  
Suite 410 - 1150 Morrison Drive  
Ottawa ON K2H 8S9 613-828-7800

Project Title:  
Mills Supportive Housing - Phase 3  
375 Country Street  
Almonte ON K0K 1A0

Drawing Title:  
PHASE 3 - Site Servicing Plan

Job No.: 17-5109A DWG NO.  
Scale: NOTED  
Date: DEC 2017  
Drawn By: SM Checked By: RT



SITE SERVICING PLAN  
SCALE: 1:250

REMOVE NOTE No. 19

C1