

OY/PROJECTS/XDS-V7-00-03 FRAME = active/Eng/16-B-17646/ver01-dxmoreau/Bldg-A/Drftg/x06L active/Eng/16-B-17646/ver01-dxmoreau/Bldg-A/Drftg/x06R 10/ 6/17 09:07:54 10/ 6/17 09:07:54  
 OY/PROJECTS/XDS-V7-00-03 FB SET = Eng/16-B-17646/ver01-dxmoreau/Bldg-A/DRFTG/x06L Eng/16-B-17646/ver01-dxmoreau/Bldg-A/DRFTG/x06R

**GENERAL NOTES**  
 FRAME CLEARANCES SHOWN ARE APPROXIMATE AND MAY VARY DUE TO CONDITIONS (DEFLECTION).  
 VERTICAL CLEARANCE DIMENSIONS ARE FROM FINISHED FLOOR REFERENCE ELEVATION.

\* DENOTES: PLATE AT FLANGE BRACE  
 CL190 AT 8" PURLINS/GIRTS  
 CL191 AT 10" PURLINS/GIRTS  
 CL192 AT 12" PURLINS/GIRTS

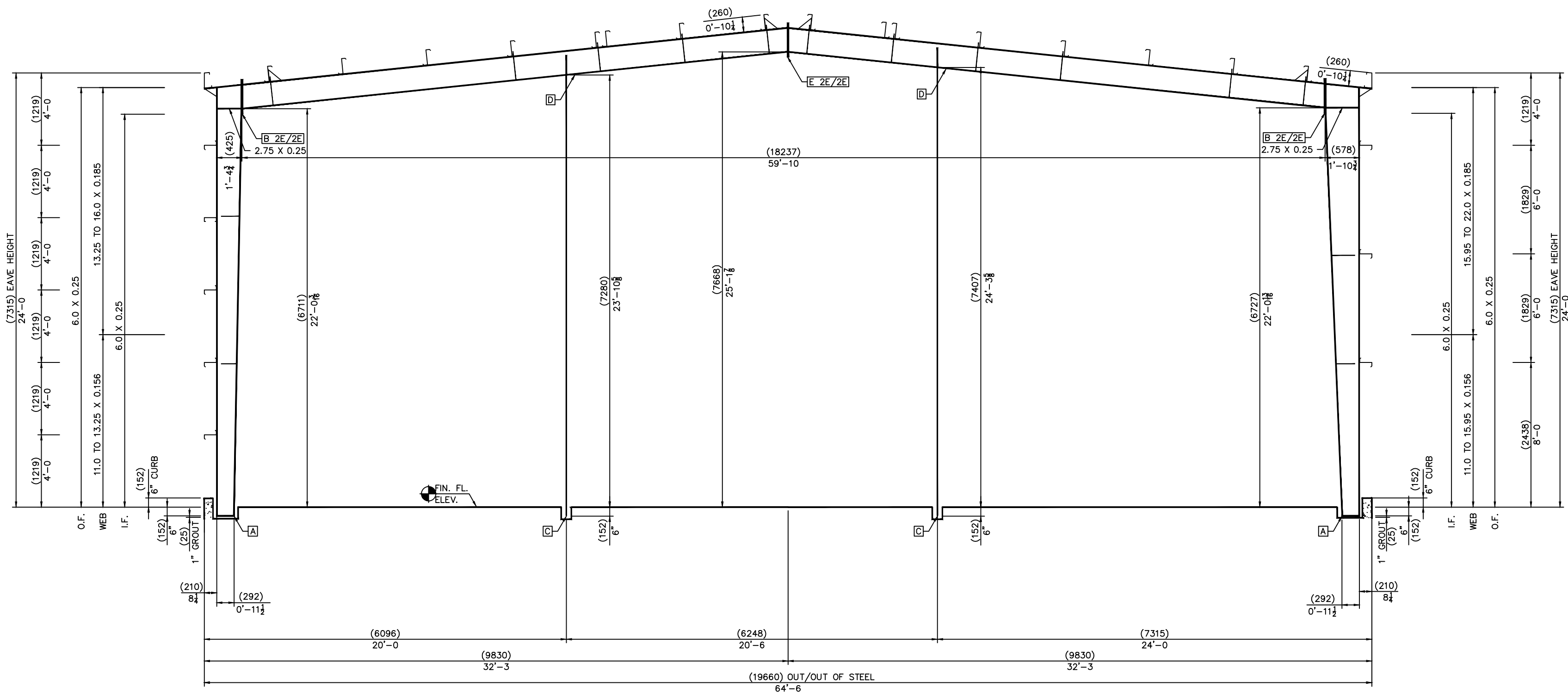
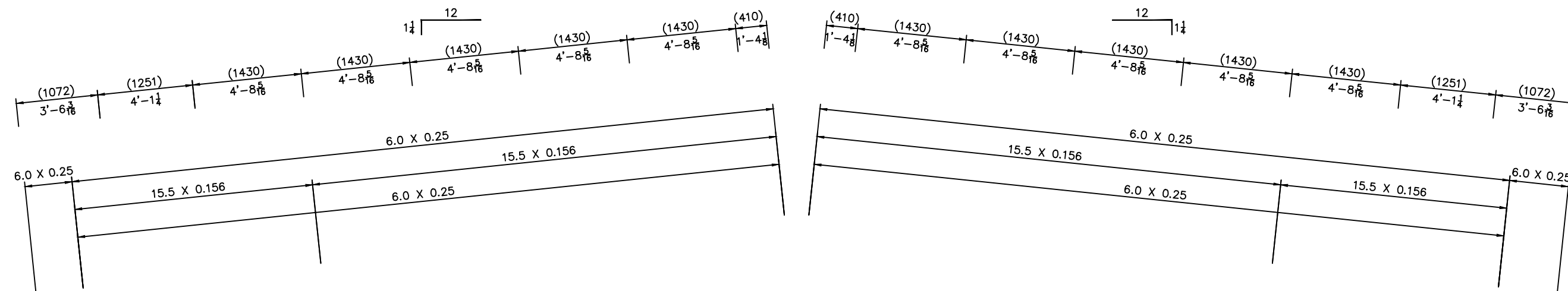


PLATE SIZE TABLE		SPLICE BOLT TABLE					
CONN.	LOW SIDE	HIGH SIDE	QTY.	SIZE	TYPE	HARDENED WASHERS	BEVELED WASHERS
A	8 X 0.375 X 0'-11 1/2						
B	6 X 0.5 X 1'-10 3/8	6 X 0.5 X 1'-10 3/8	(8)	3/4 X 2"	A325 B&N	0	0
C	8 X 0.375 X 0'-10						
D	10 X 0.375 X 0'-11 1/2		(4)	1/2 X 1 1/2	A325 B&N	1	0
E	6 X 0.375 X 1'-10 3/8	6 X 0.375 X 1'-10 3/8	(8)	3/4 X 1 1/2	A325 B&N	0	0

$8 \times \frac{3}{8}$ -FLG./0.156x9 1/4=WEB

$8 \times \frac{3}{8}$ -FLG./0.156x9 1/4=WEB

CROSS SECTION AT FRAME LINE "6"

Revision	Date	Description	By	Ch'd

1343 SANDHILL DRIVE  
 ANCASTER, ONTARIO L9G 4V5  
 905-304-1111  
**Robertson**  
 Robertson Building Systems  
 Customer: ARGUE CONSTRUCTION LTD.  
 CARR, ON  
 Project Name & Location: VANSON TRUCKING  
 OTTAWA, ON

Drawing Status:  
 Preliminary (Not For Construction)  
 For Approval  
 For Construction Permit  
 For Erector Installation

Scale: NOT TO SCALE  
 Drawn by: MLH 10/17/17  
 Checked by: A.S. 10/17/17  
 Project Engineer: AIS  
 Job Number: 16-B-17646  
 Sheet Number: E14 of 15

The engineer whose seal appears hereon is an employee for the manufacturer for the materials described herein. Said seal or certification is limited to the products designed and manufactured by manufacturer only. The undersigned engineer is not the overall engineer of record for this project.

A. Szilveszter, P.ENG  
 Ontario P.ENG 100041568  
 DRROTA ENR01A

